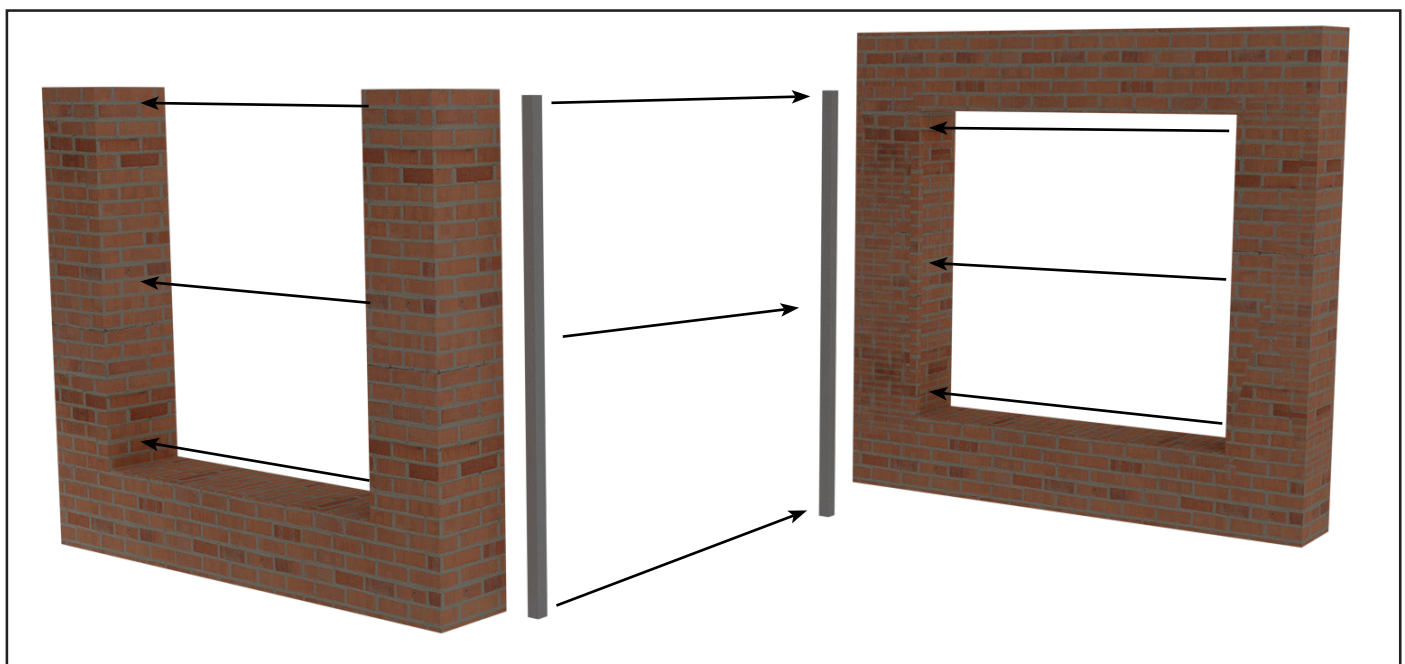
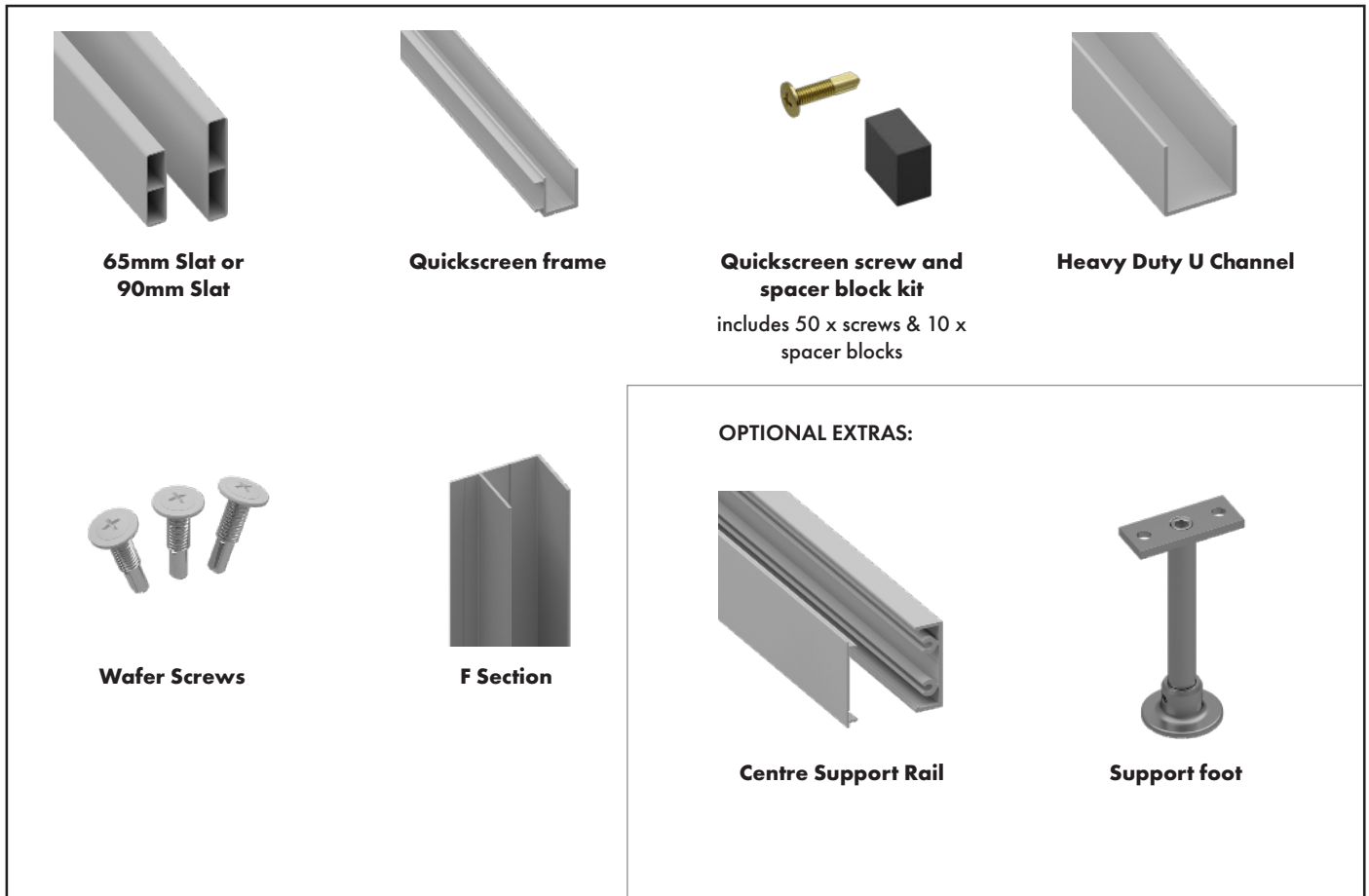


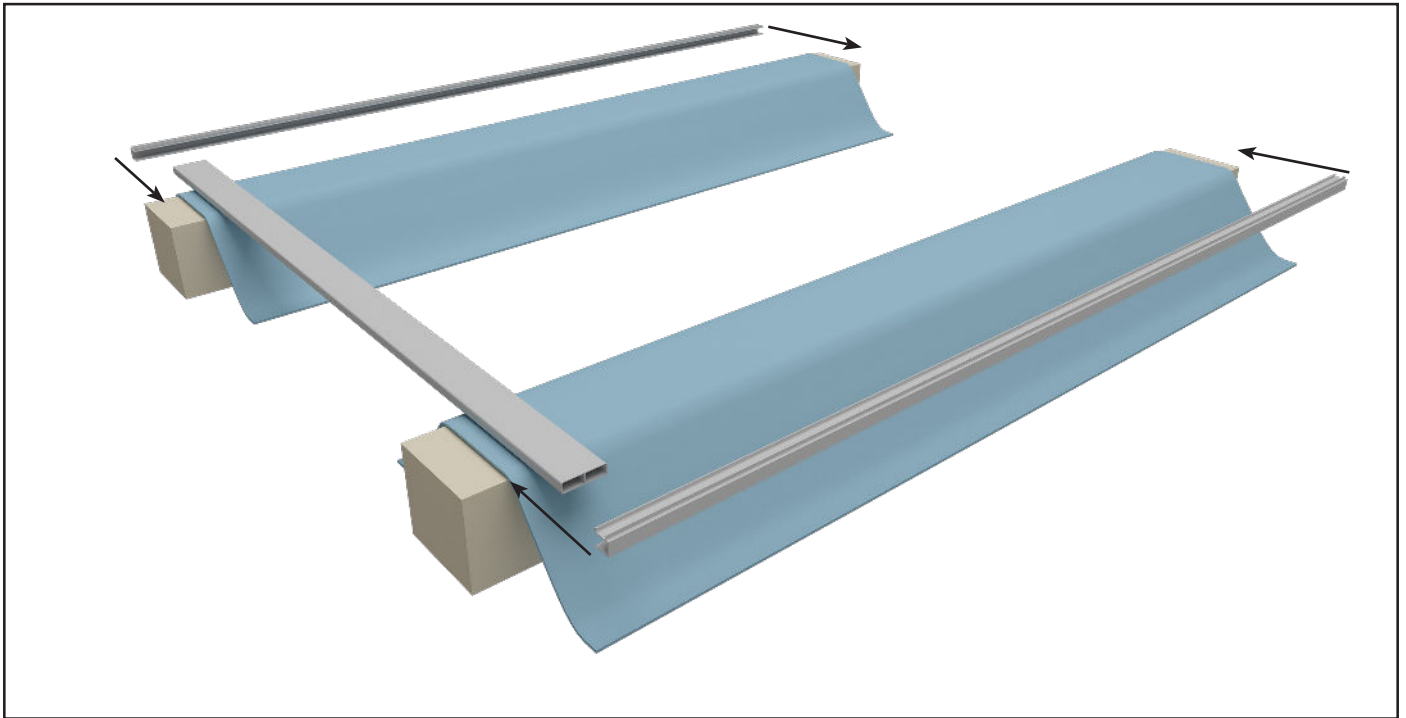


# VERTICAL SLAT SCREENING VARIABLE SLAT & SPACING PANEL QUICKSCREEN FRAME

## INSTALLATION OVERVIEW

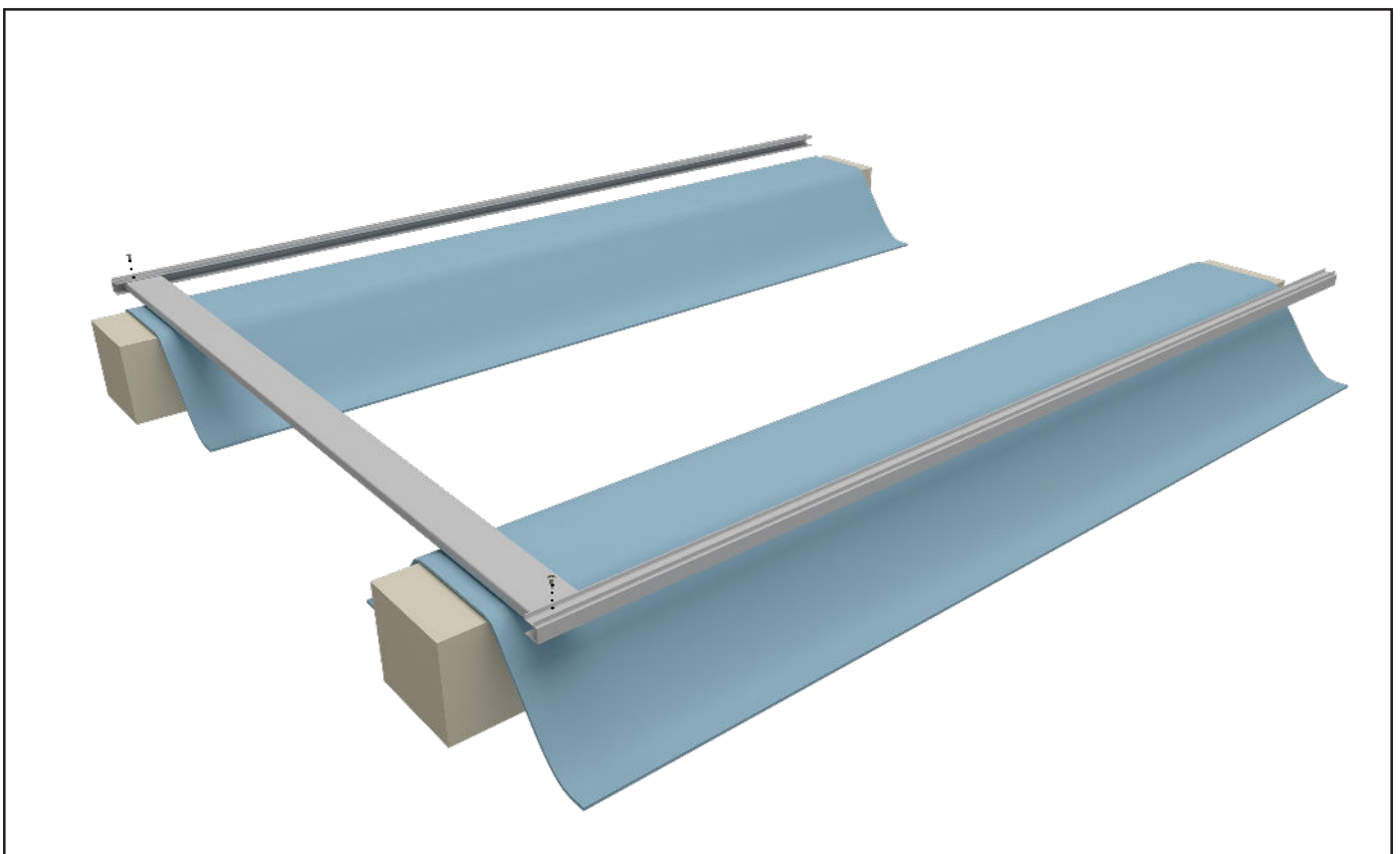
**1**

Record horizontal measurements between walls or posts at 3 points; top, middle and bottom - taking note of the smallest measurement.

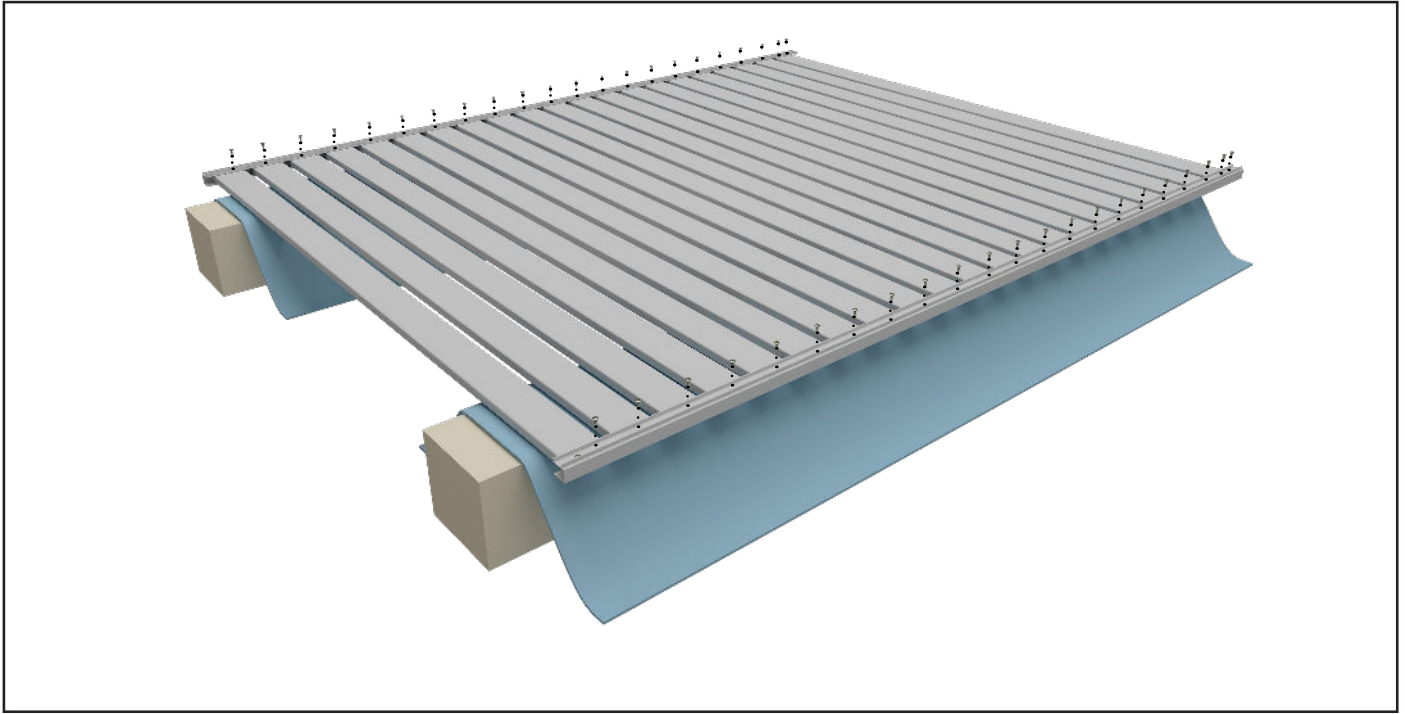


- 2** Place first slat on padded bearers, then position the Quickscreen frame as top and bottom frames onto the slat.

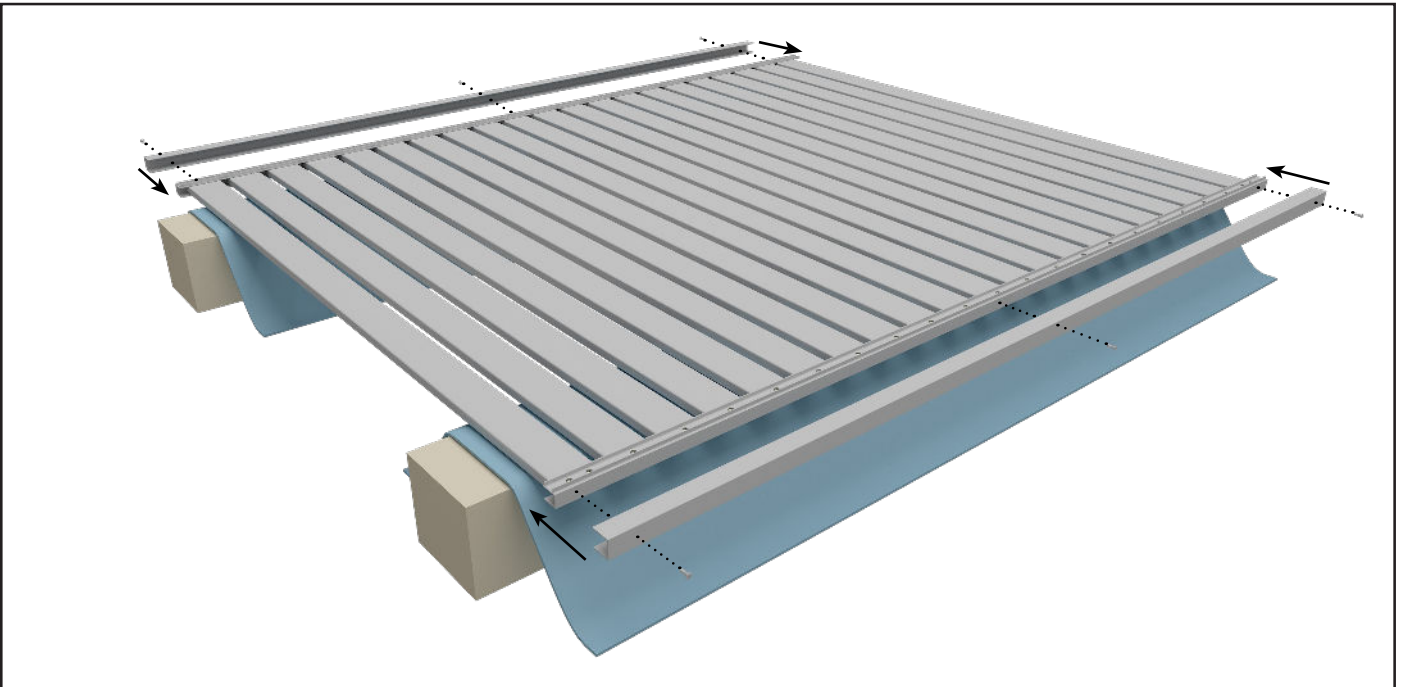
NOTE: Panel height not to exceed 2400mm high



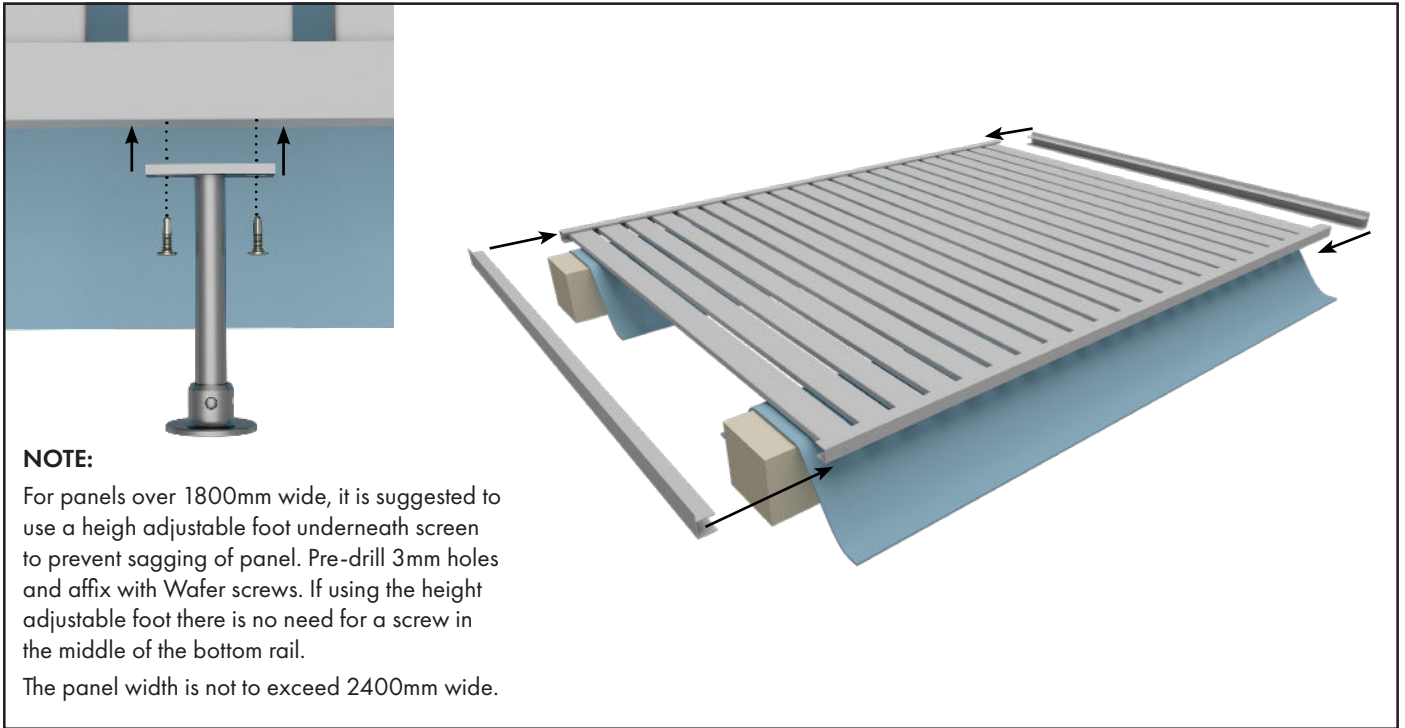
- 3** Position front edge of slat at the required distance from the edge of the top and bottom frame. Using the Quickscreen screws, affix at both ends of the slat with 1 screw per end.



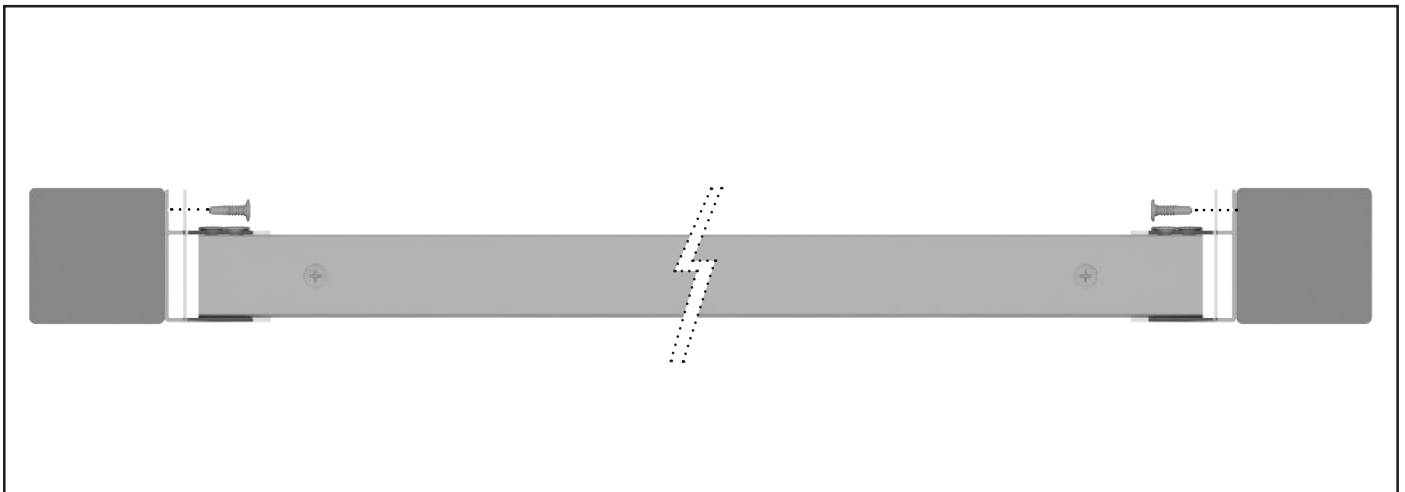
- 4 Slide remaining slats into the top and bottom frame at the required spacings and attach with a single Quickscreen screw through top and bottom frames, then check measure diagonals. Double screw-fix the first and last slats. **Keep specified slat spacing in mind.** If spacings differ from 9mm, 15mm or 20mm, discard the Quickscreen kit spacer blocks and measure each spacing manually.



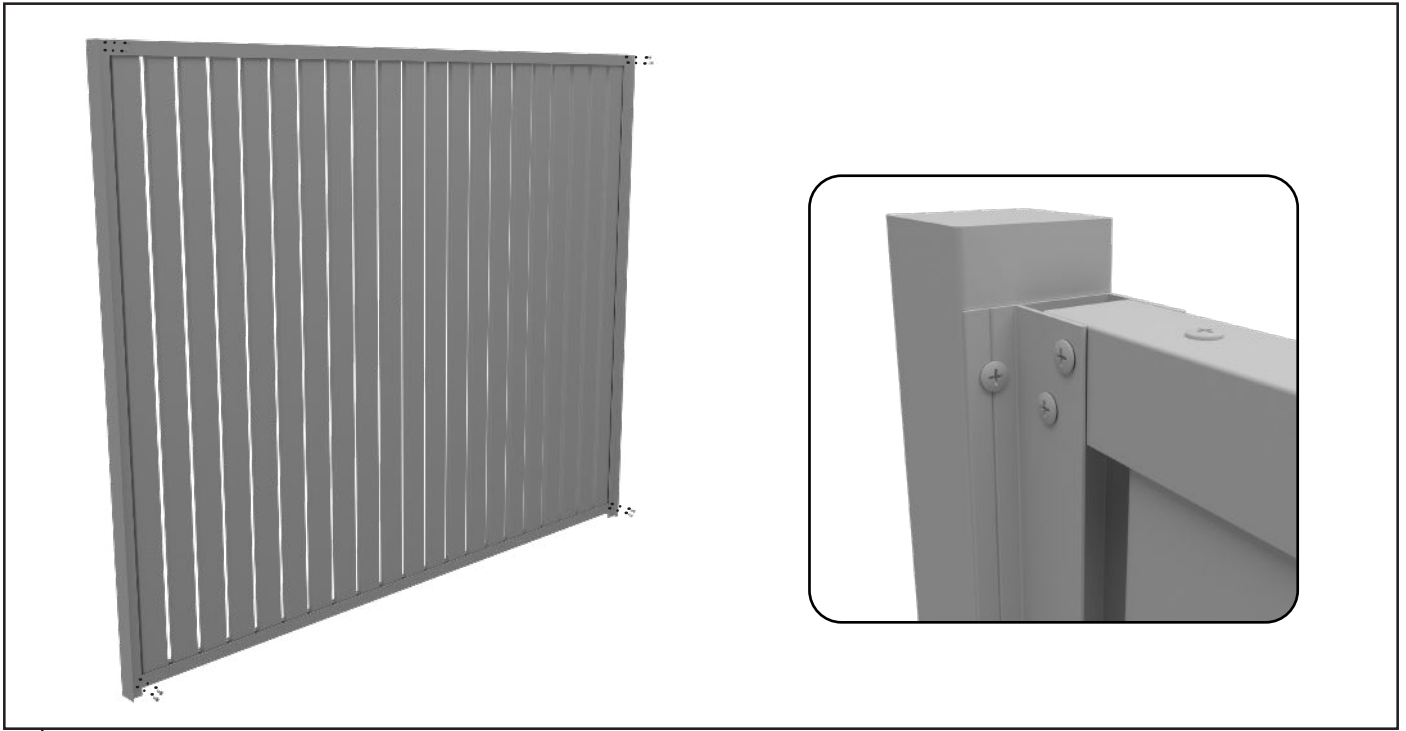
- 5 Place U channel over top and bottom frame, pre-drill 3mm holes and affix in three points on top and bottom of the U channel using Wafer screws. Measure in 50mm from the left and right edges, then one in the centre. Ensure sufficient pilot holes are drilled before affixing, making sure they won't hit other screws.



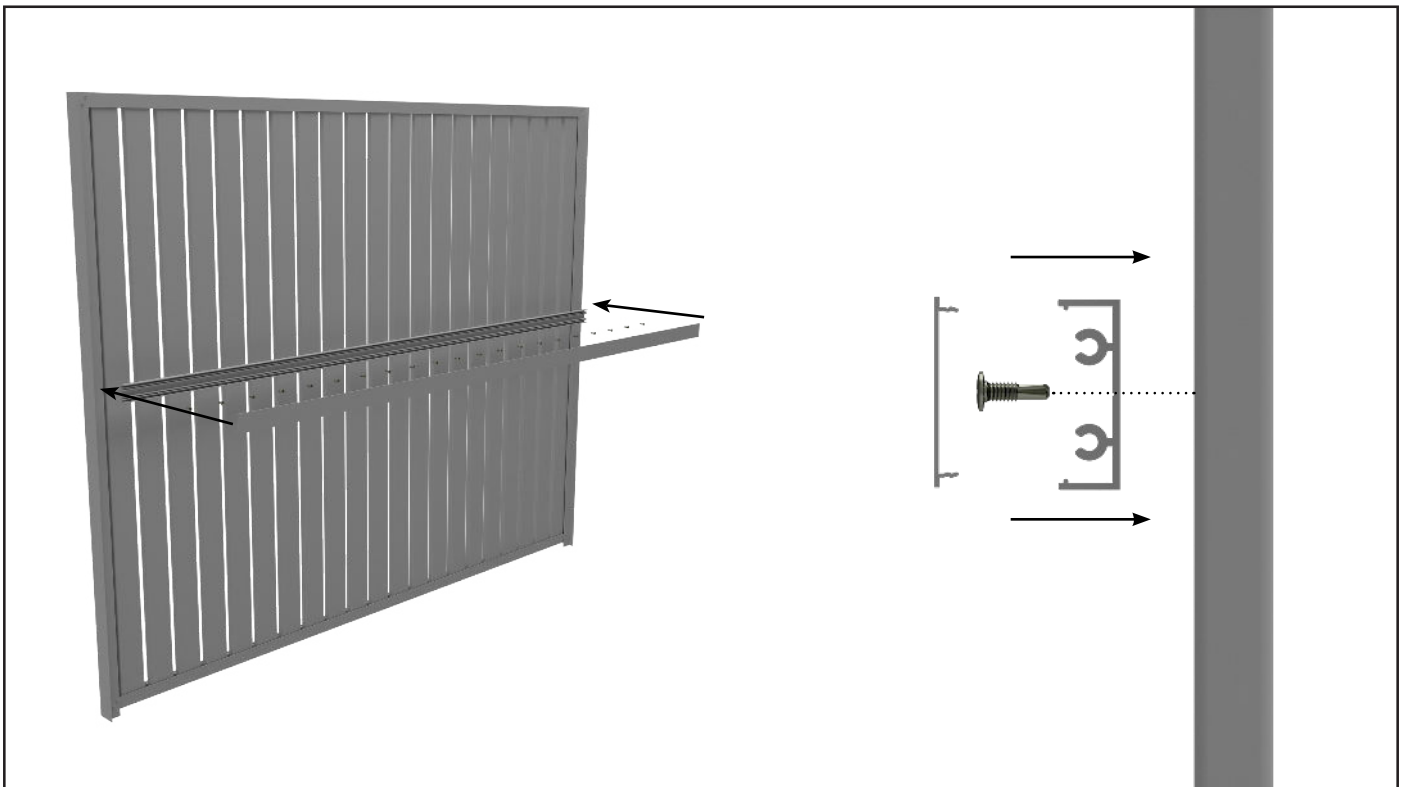
- 6** Place F section over each side of panel - F section will stay in place without screws until the last step.



- 7** Lift panel into opening and push F section out to sit flush to wall then affix F section to wall (fixings not included). **Ensure sufficient pilot holes are drilled before affixing.**



- 8** Affix panel to F section by pre-drilling 3mm holes and screwing through F section in corner positions. It is suggested to use 2 Wafer screws in each corner.



- 9** For vertical slat panels with a height greater than 2000mm, position a centre support rail horizontally at the rear centre of screen and screw off each slat using the Quickscreen kit screws.

NOTE: Adjust centre support rail positioning if pool fencing considerations are required.