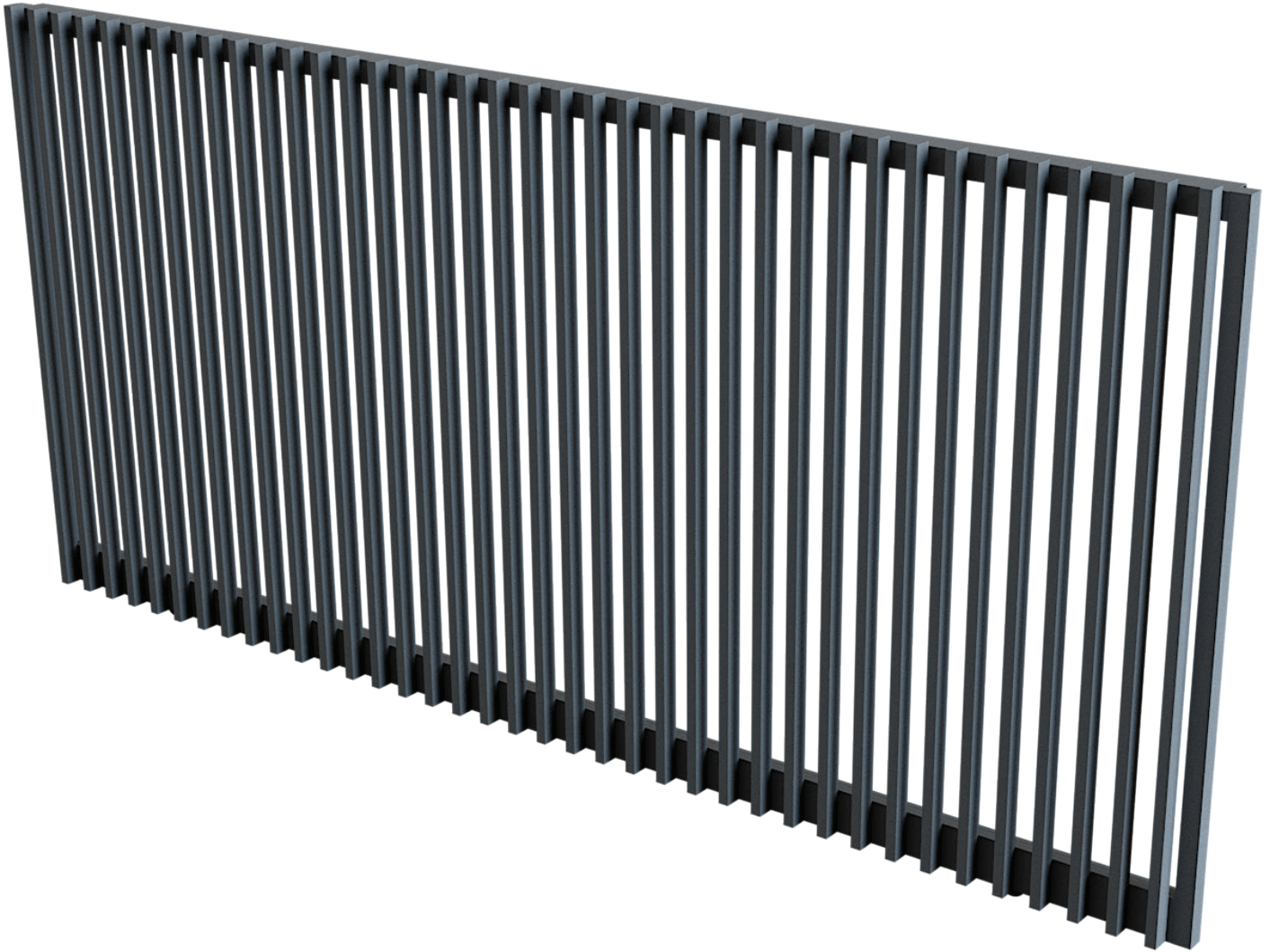




QUICKSCREEN SLIDING GATE
NEXIA VERTICAL BATTEN
SLIDING GATE

FABRICATION
OVERVIEW

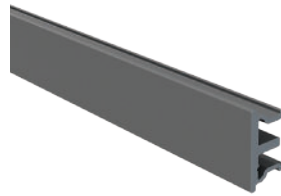




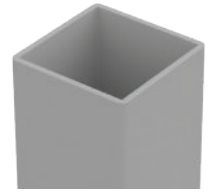
Nexia Batten and Clip
(various sizes)



Gate Side Frame



Gate Screw Cover



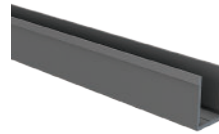
65x65 Steel Post



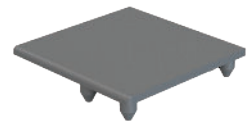
65mm Top Rail



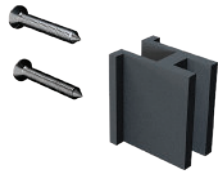
Bottom Rail



Gate Infill



Gate Top Cap



Joiner Blocks and
Screws for Top/Bottom
Rails



Panhead Screws



Nexia End Caps, End
Plates and Connector
Plates
(various sizes)



Self-drilling
Wafer Screws



Slide Guide

OR



Roller Guides
(Left and Right - fixings not included)



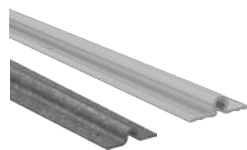
Gate Wheel



Wheel Clamping Set



Track Pins



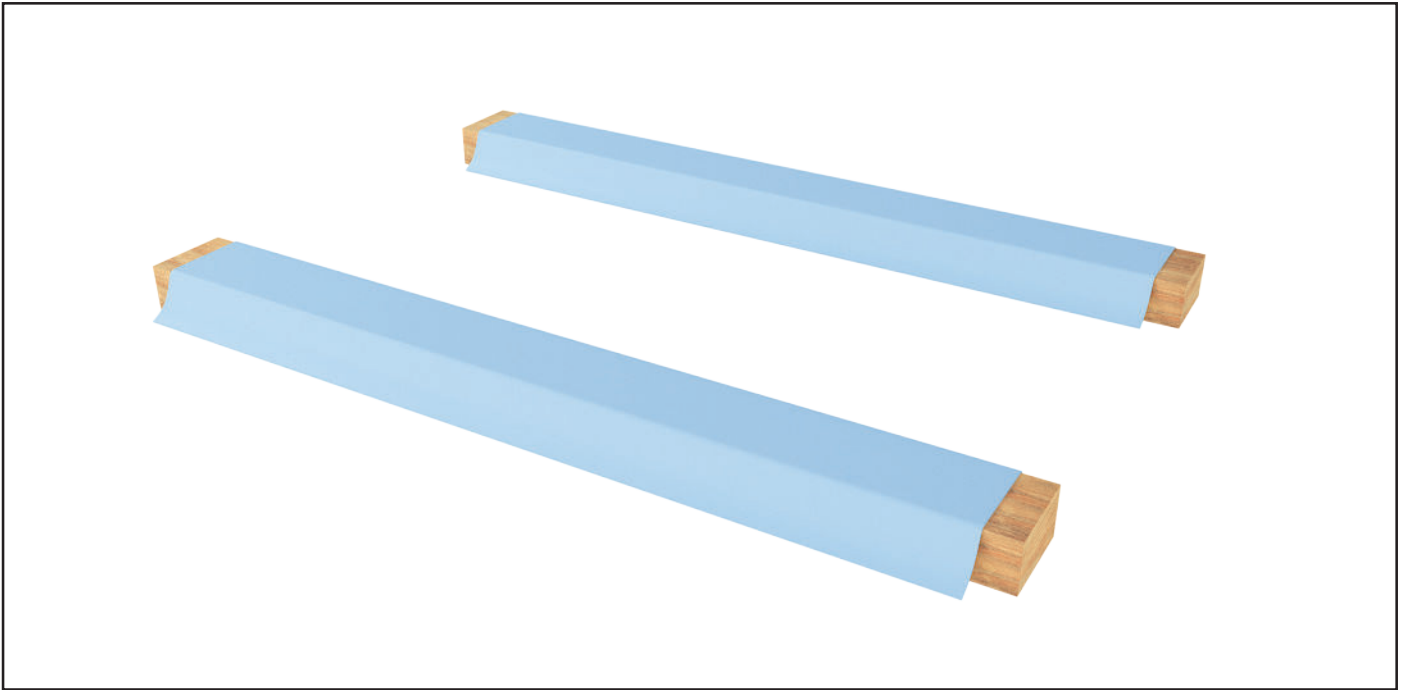
Sliding Gate Track
Steel or Aluminium



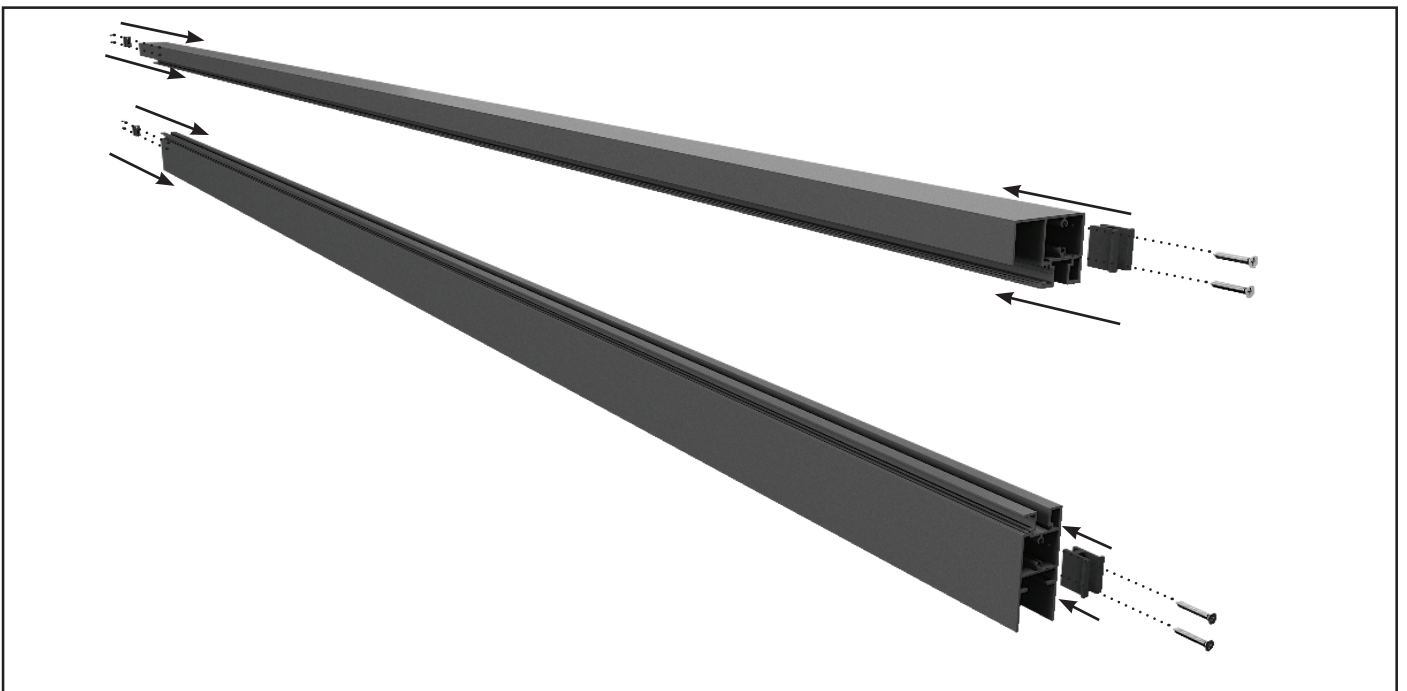
U Catch or F Catch
Fixings not included



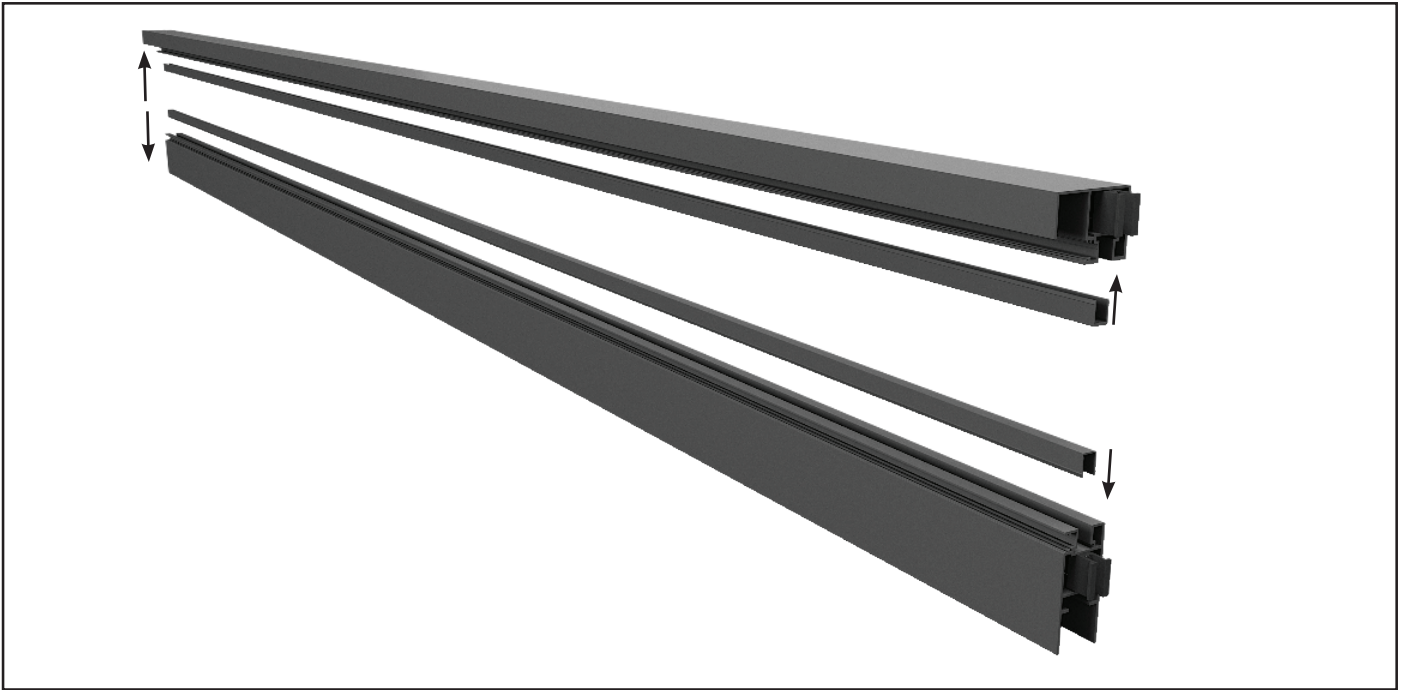
Gate Stop
Fixings not included



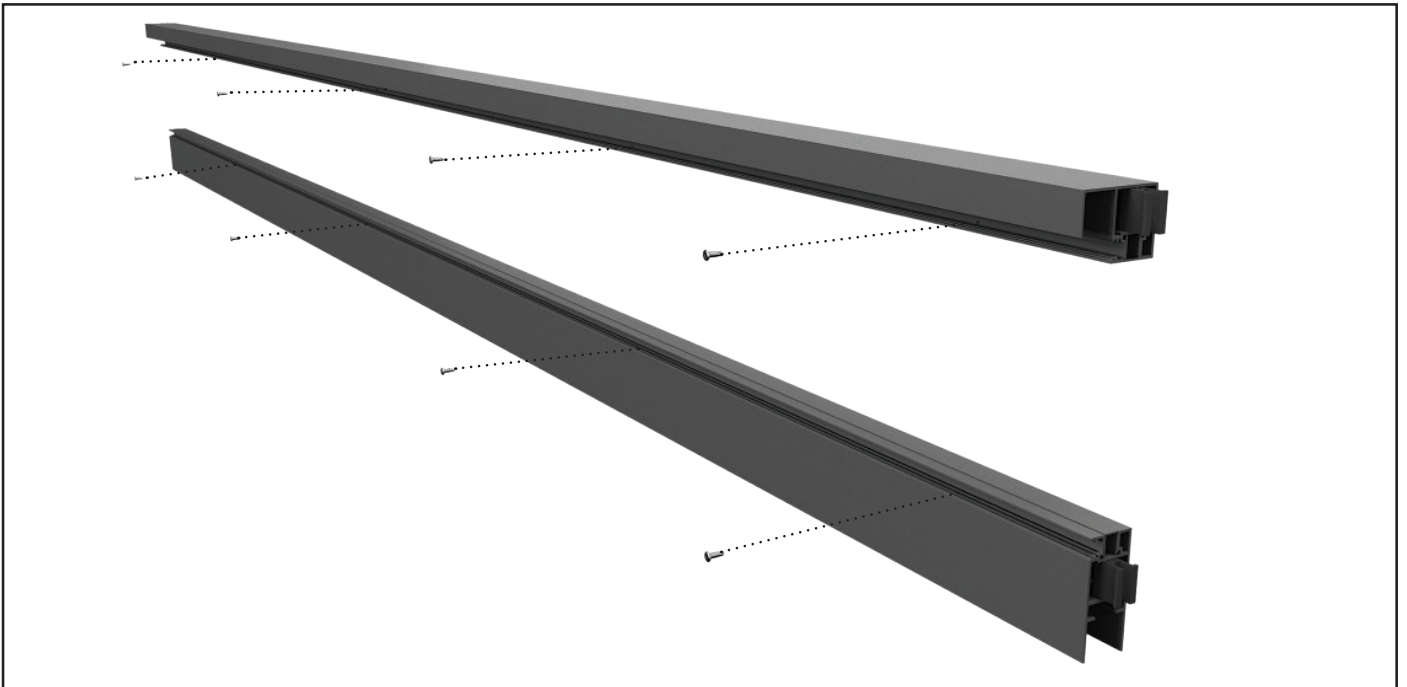
1 Set up the gate fabrication area on a flat, protected surface or padded bearers



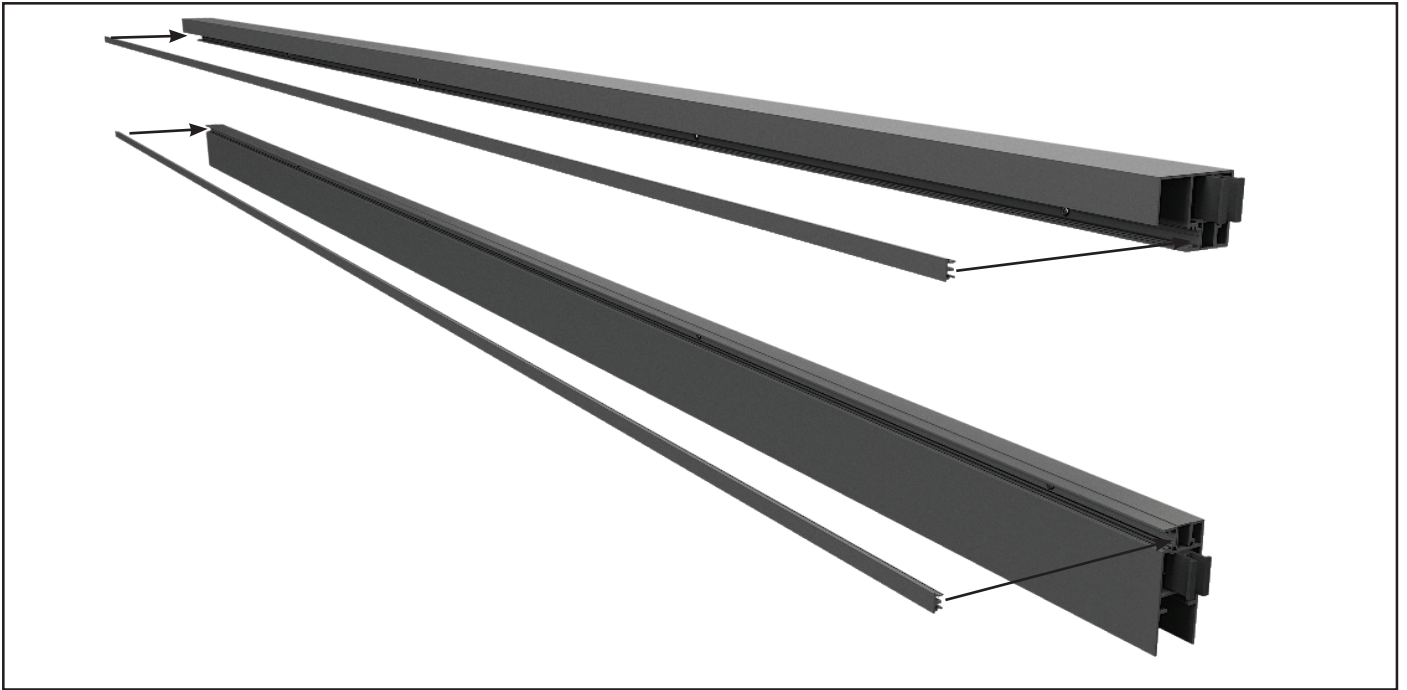
2 Attach the Joiner Blocks to both ends of the Top and Bottom Rails with two screws per Joiner block using a Phillips head #3 driver bit on a low-torque/low-speed cordless drill setting.



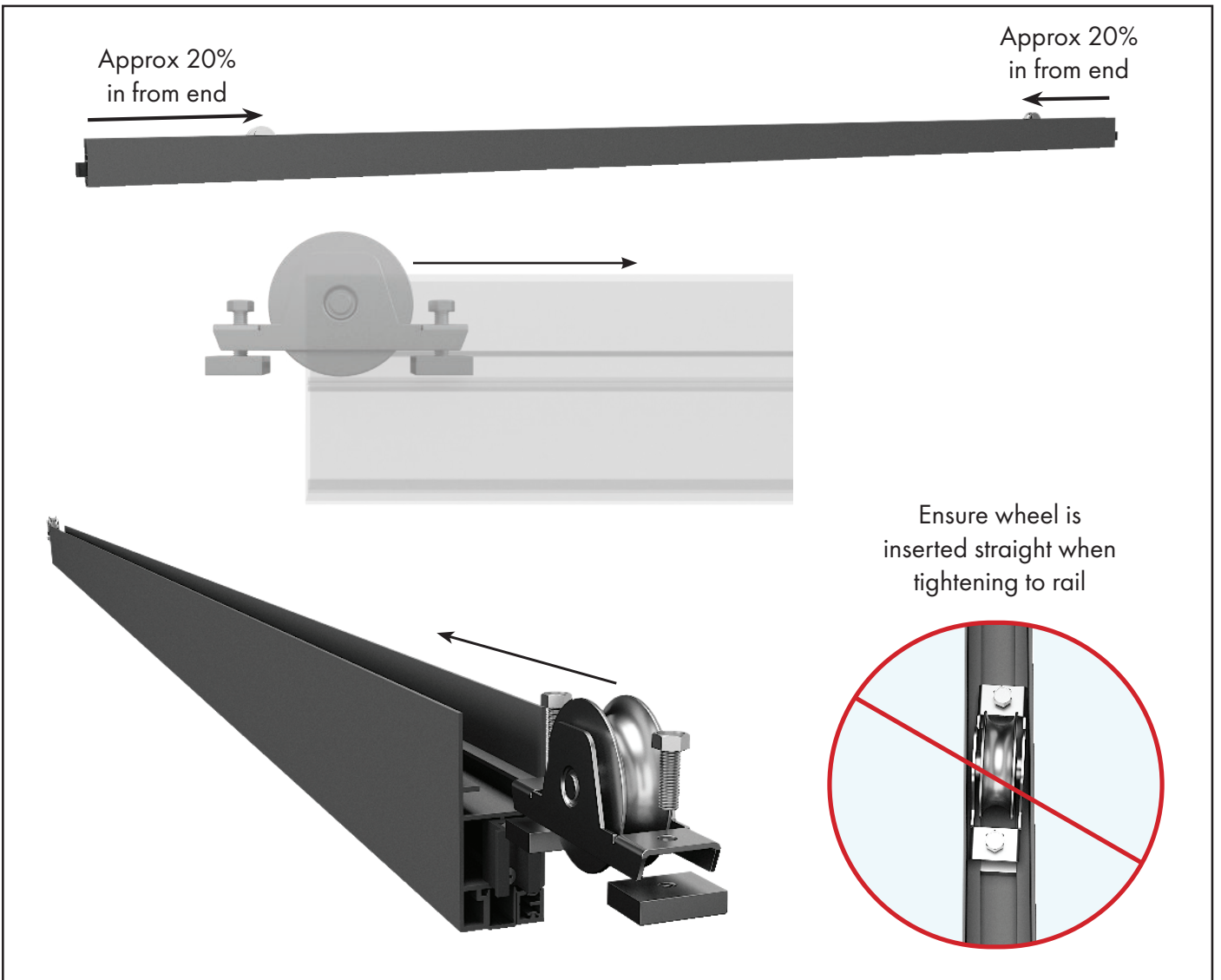
3 Insert Gate Infills to the Top and Bottom Rails. Depending on the width of the gate, 2 x Infills may be used and join in the middle.



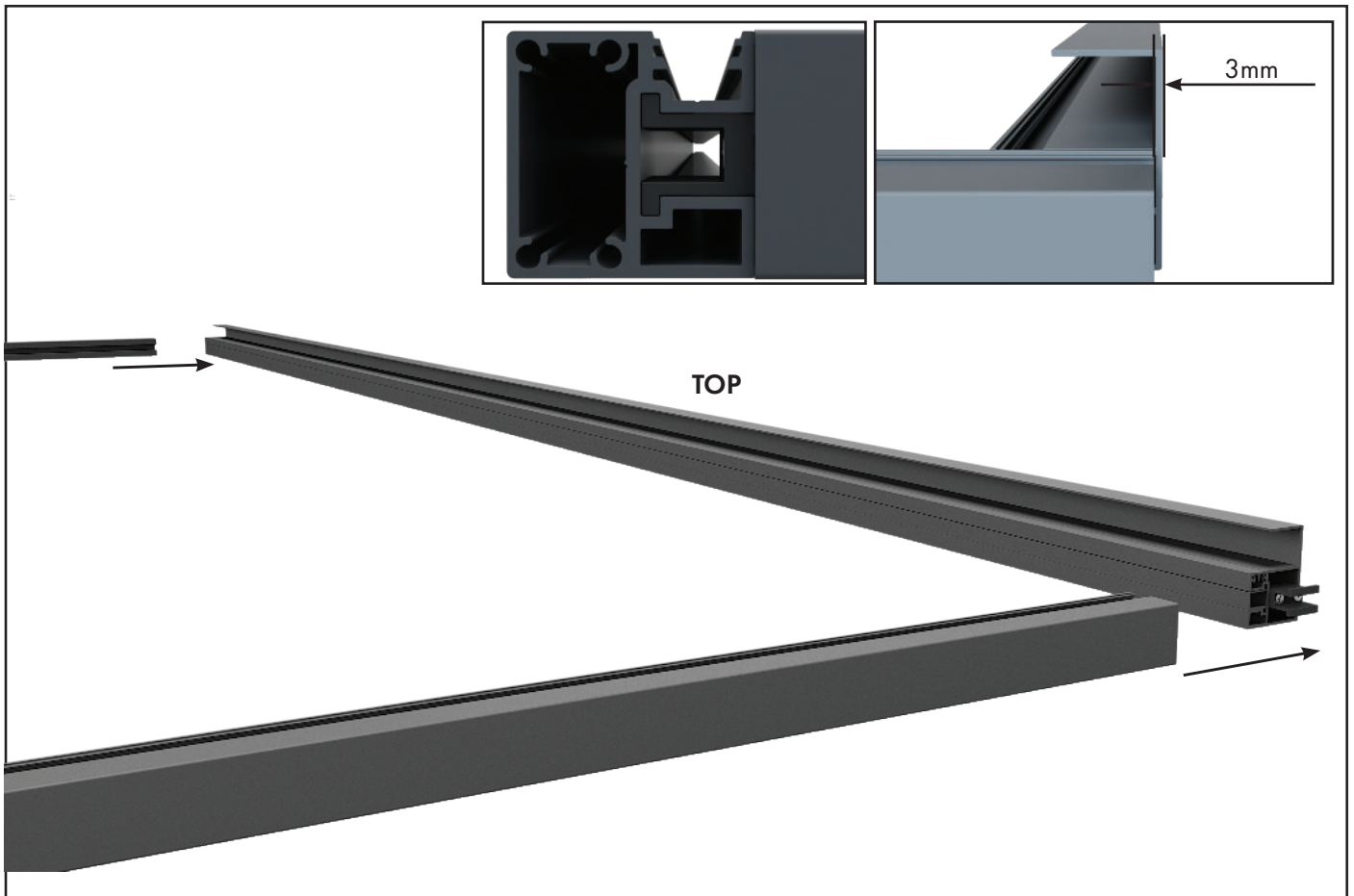
4 Secure with two self-drilling wafer screws per Gate Infill within the screw channel.



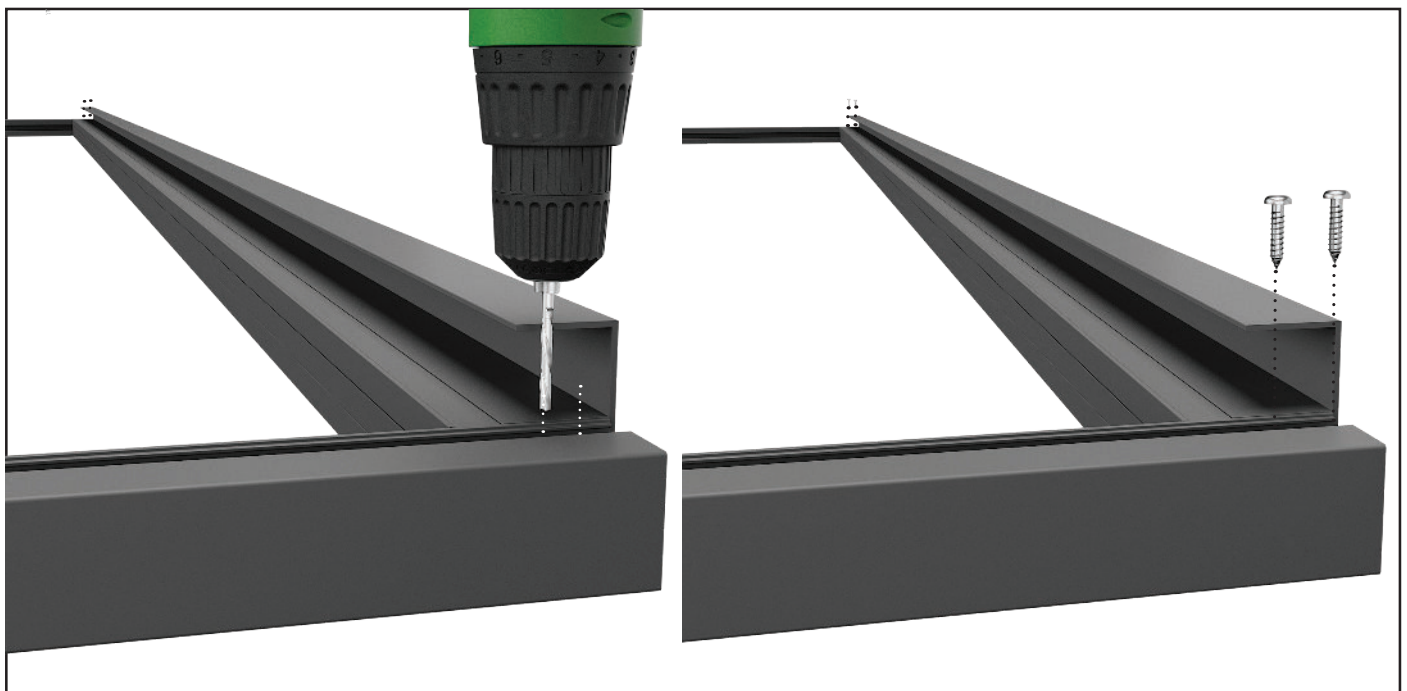
5 Snap on Gate Covers to conceal screws. Depending on the width of the gate, 2 x Covers may be used and meet in the middle.



6 Loosely attach wheel clamping sets to both wheels. Then place bottom rail upside down on timber bearers and slide both wheels into position (approx 20% from each end of bottom rail), then tighten bolts.



- 7 Slide Gate Side Frames (left and right) onto the Top Rail, leaving a 3mm gap at the top for top caps.



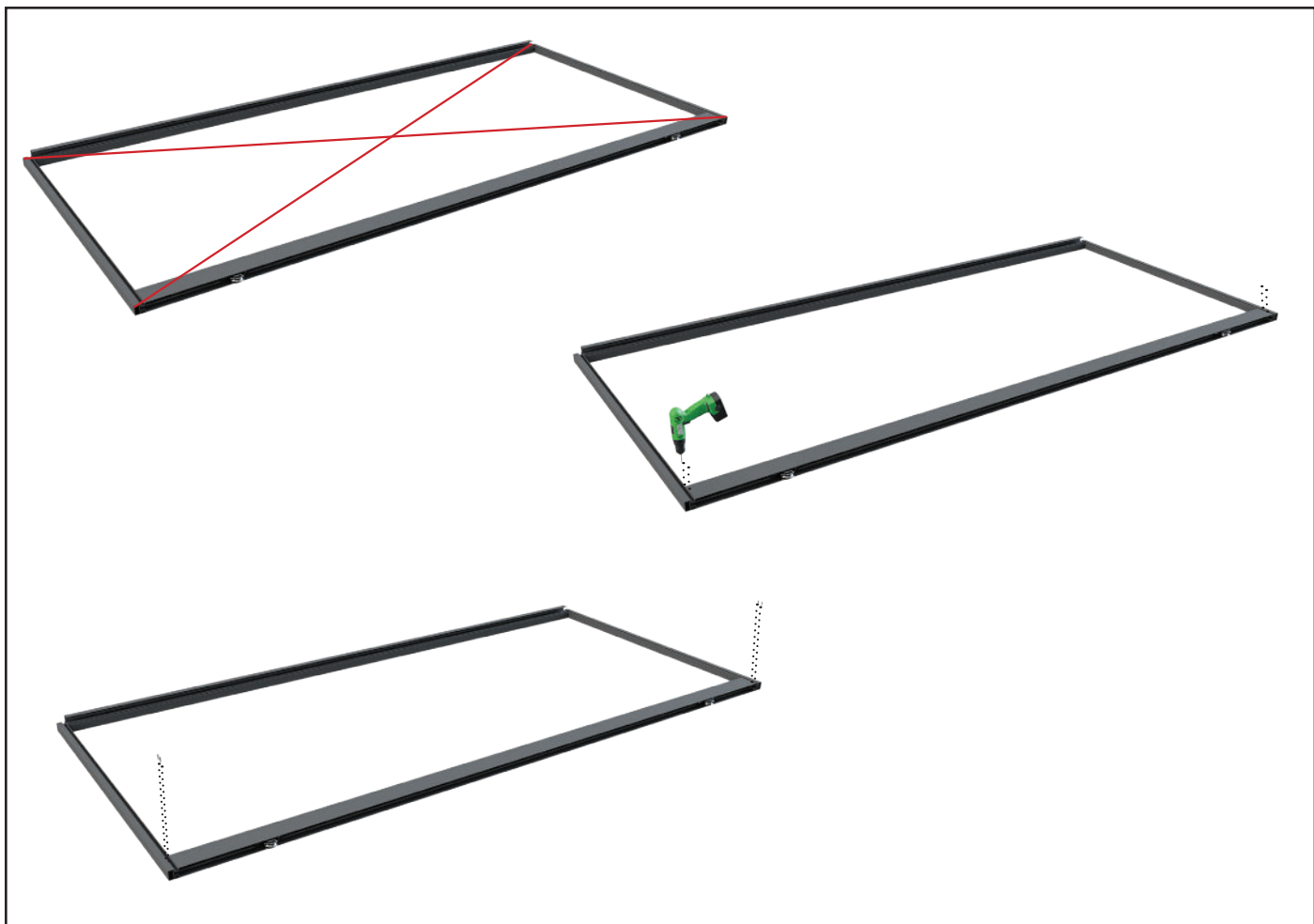
- 8 Pre-drill two 5mm holes through the Gate Side Frame screw channel and Joiner Blocks on both sides. Affix two 12G x 25mm long panhead screws per Joiner Block.



9 Insert Gate Infills into the Gate Side Frames



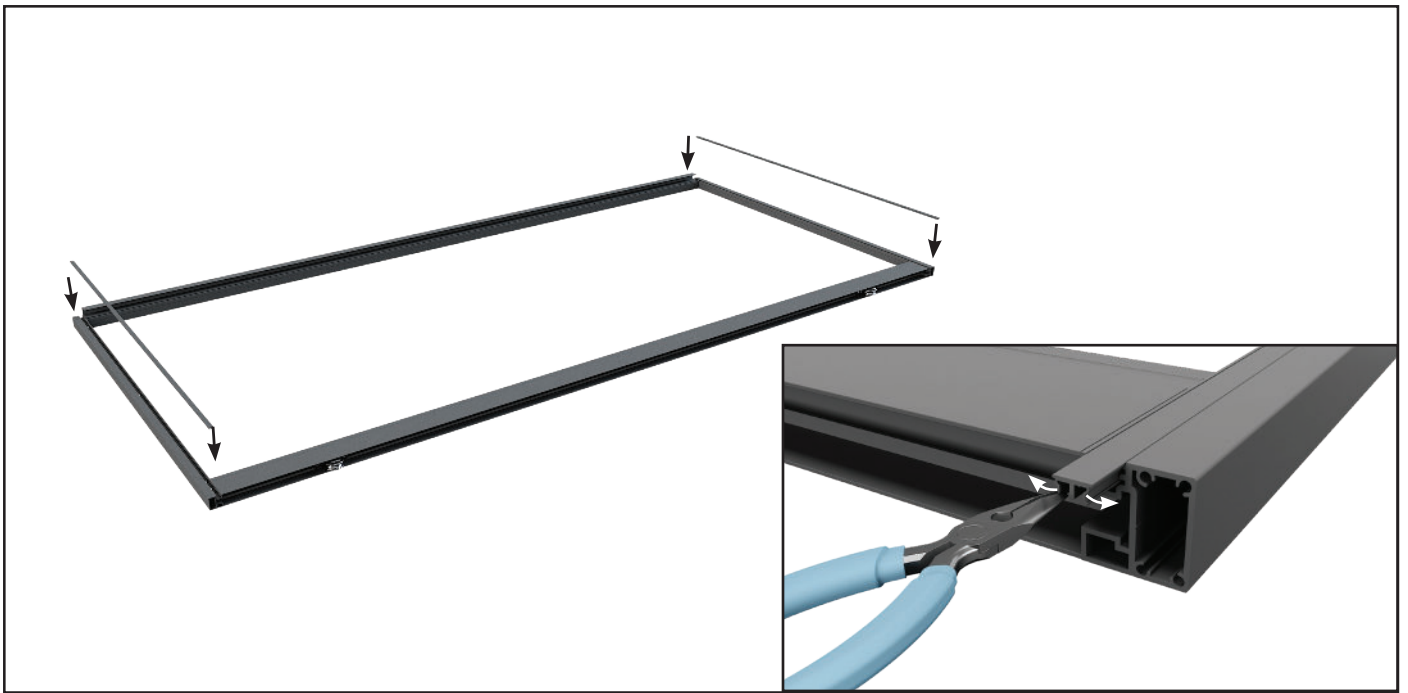
10 Slide the Bottom Rail onto the Gate Side Frames, ensuring the Bottom Rail aligns with the bottom of the Gate Side Frames.



- 11 Ensure the gate is square. Pre-drill two 5mm holes through the Gate Side Frame screw channel and Joiner Blocks on both sides. Affix two 12G x 25mm long panhead screws per Joiner Block.



- 12 Secure the Gate Infill with three self-drilling wafer screws each side.

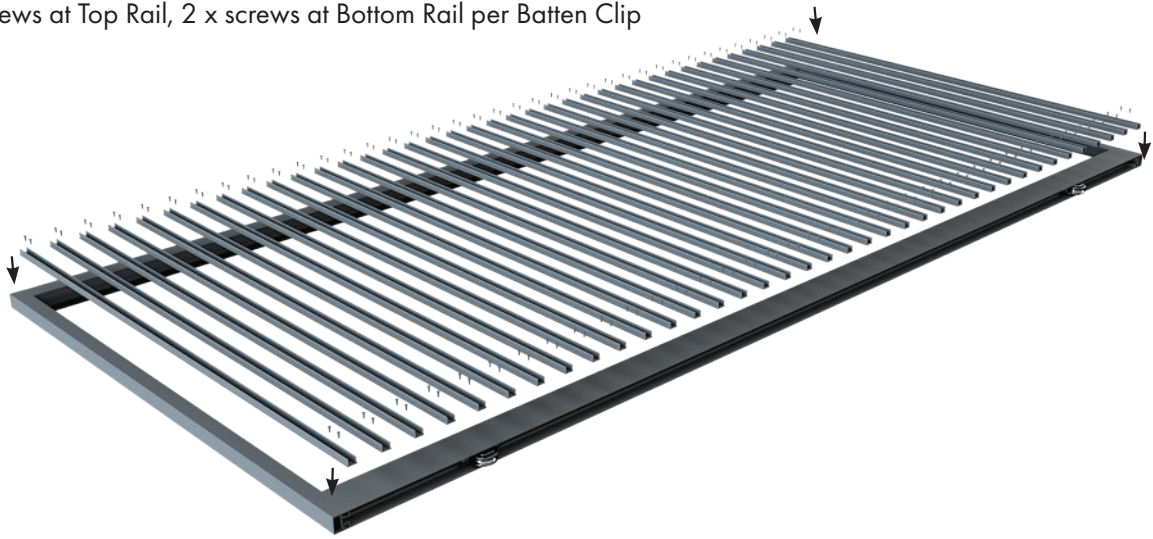


- 13 Insert the two Gate Screw Covers to the Gate Side Frames.
Once inserted, bend the Screw Cover legs as required to achieve a tight insert.

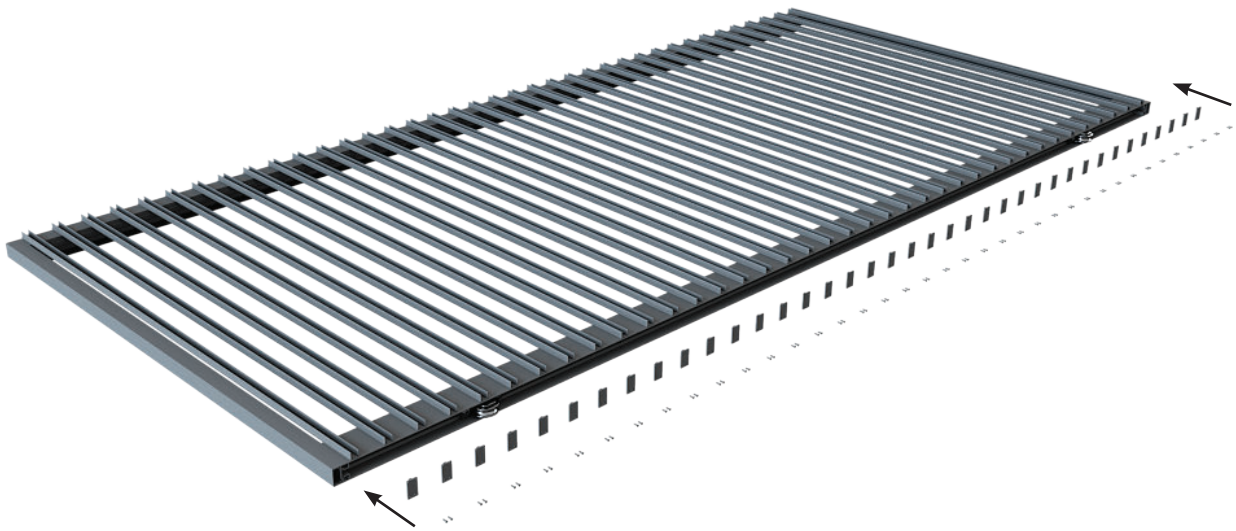


- 14 Insert the two Top Caps.

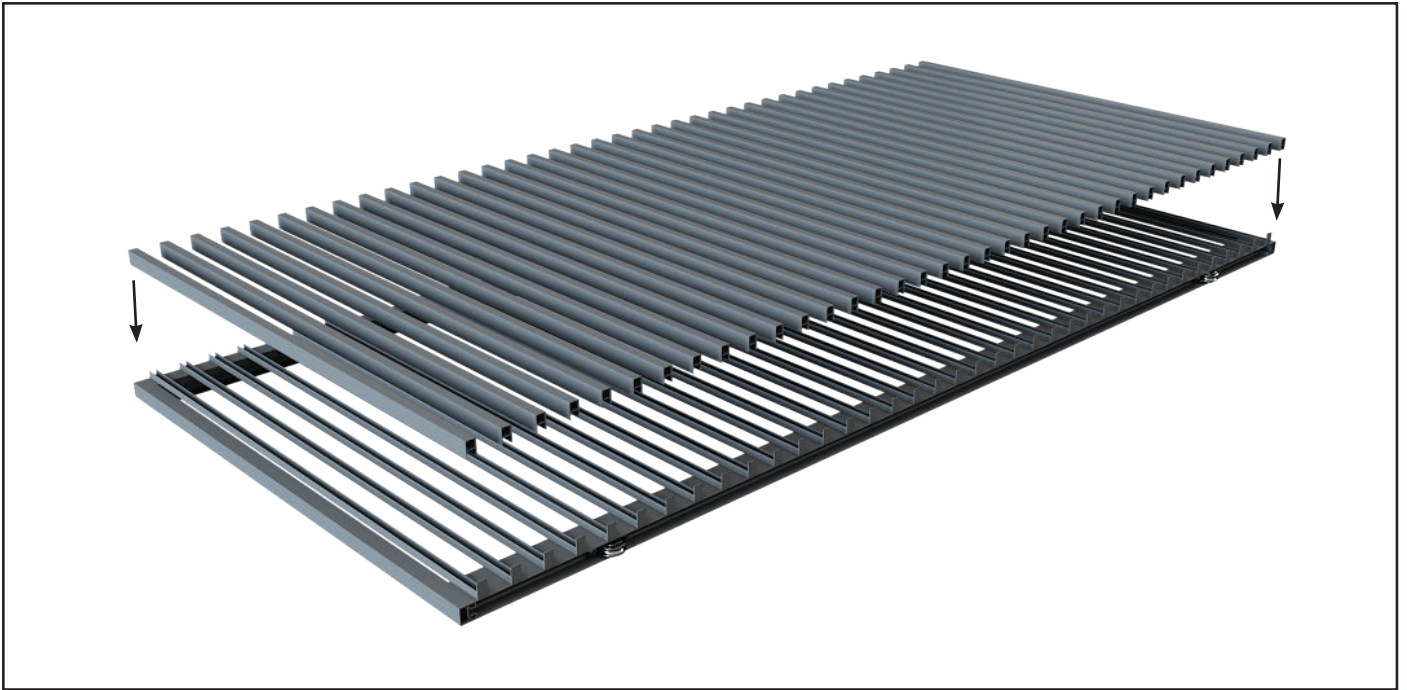
2 x screws at Top Rail, 2 x screws at Bottom Rail per Batten Clip



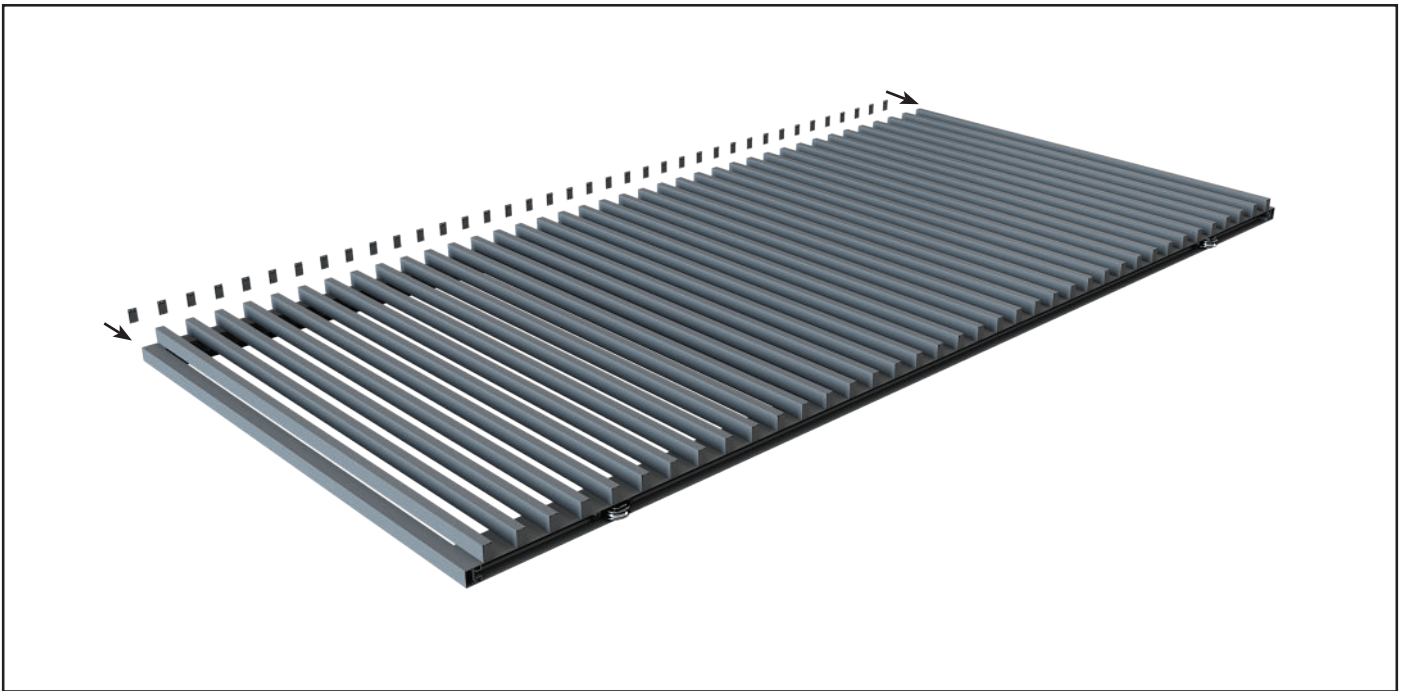
- 15 Flip to front of gate and affix with two self-drilling screws at each end the Nexia Batten Clip to the Top and Bottom Rails at the desired spacing.



- 16 Affix Connector/End Plates to the bottom of the Nexia Batten Clips with Plate Screws

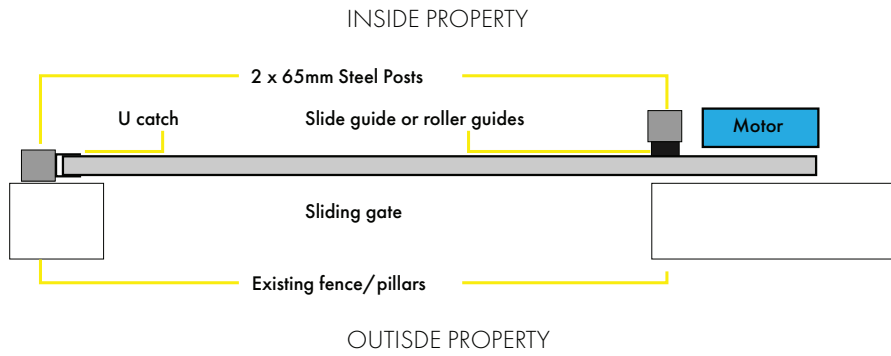


17 Clip Nexia Batten Front onto the Nexia Batten Clips.

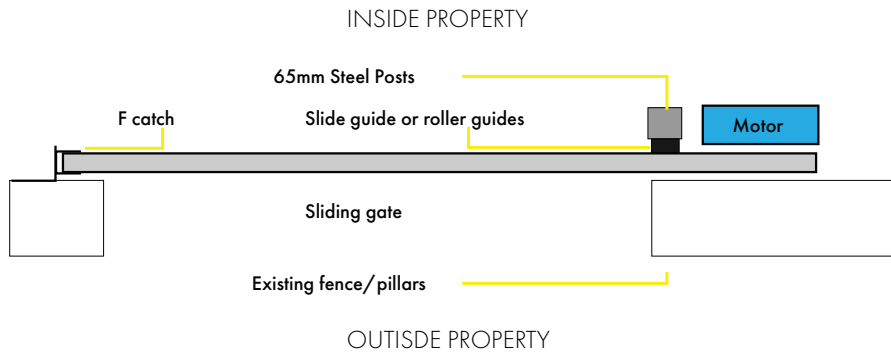


18 Push in End Caps or affix Connector/End Plates to the tops of the Nexia Battens and Clips

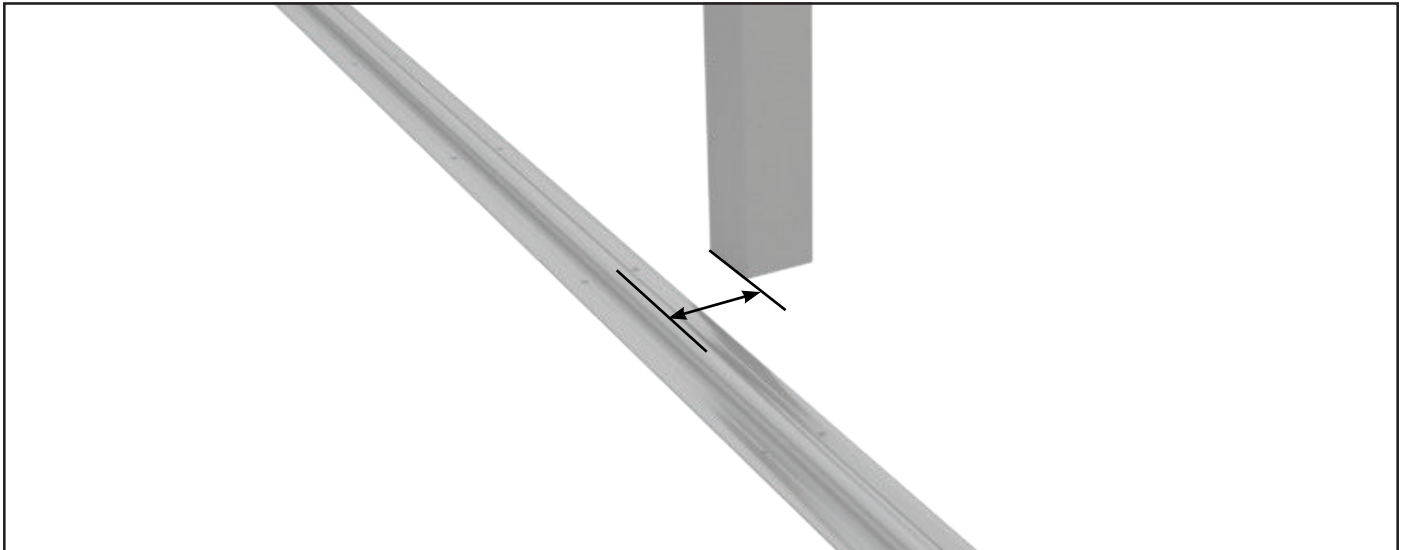
U Catch Installation



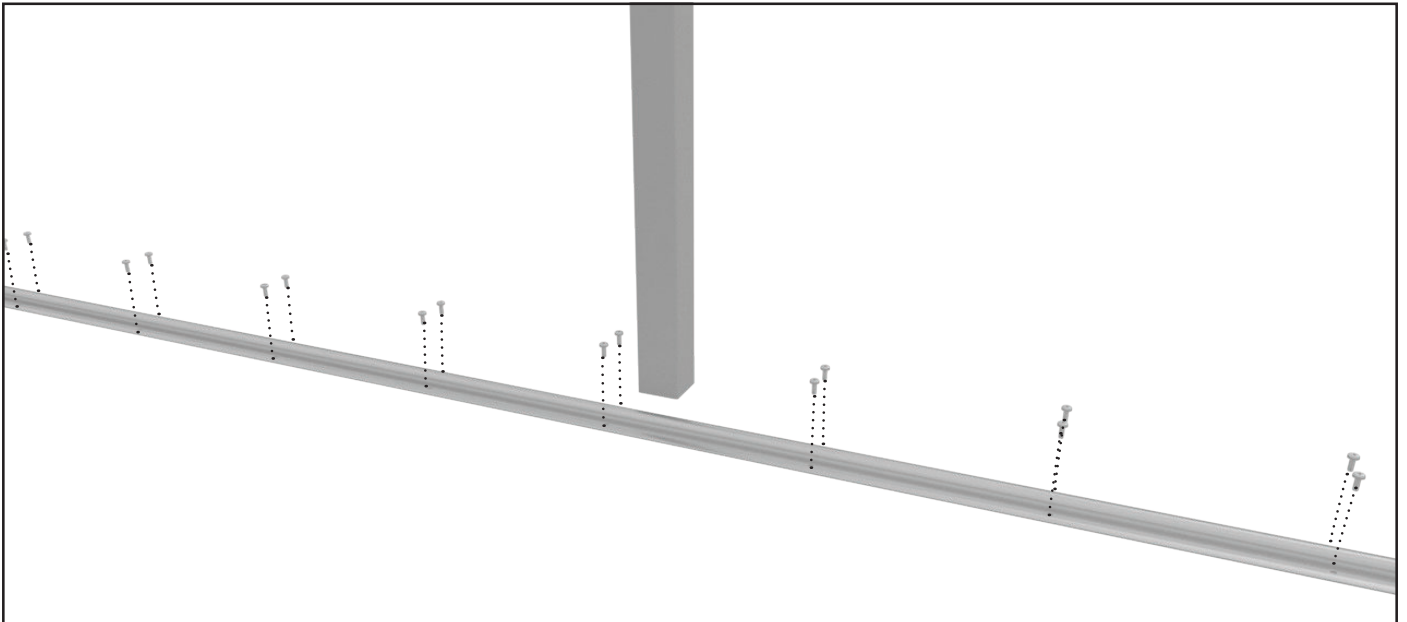
F Catch Installation



- 19 Choose from U catch or F catch and install steel posts as required with slide guide or roller guides and gate catch.



- 20 If using the slide guide, measurement from inside edge of steel post to centre of track is 105mm. If using roller guides, 2 installation options possible:
 Refer to step 24a: measurement from inside edge of steel post to centre of track is 105mm
 Refer to step 24b: measurement from inside edge of steel post to centre of track can be from 100mm to 105mm



21 TRACK INSTALLATION.

STEEL TRACK - Using a 6.5mm masonry bit, drill 45mm deep holes in concrete at each pre-drilled slot in track.

ALUMINIUM TRACK - Pre-drill holes in track at 300mm intervals on each side of the raised roller guide using the die line as guide. Using a 6.5mm masonry bit, drill 45mm deep holes in concrete at each pre-drilled hole in track.

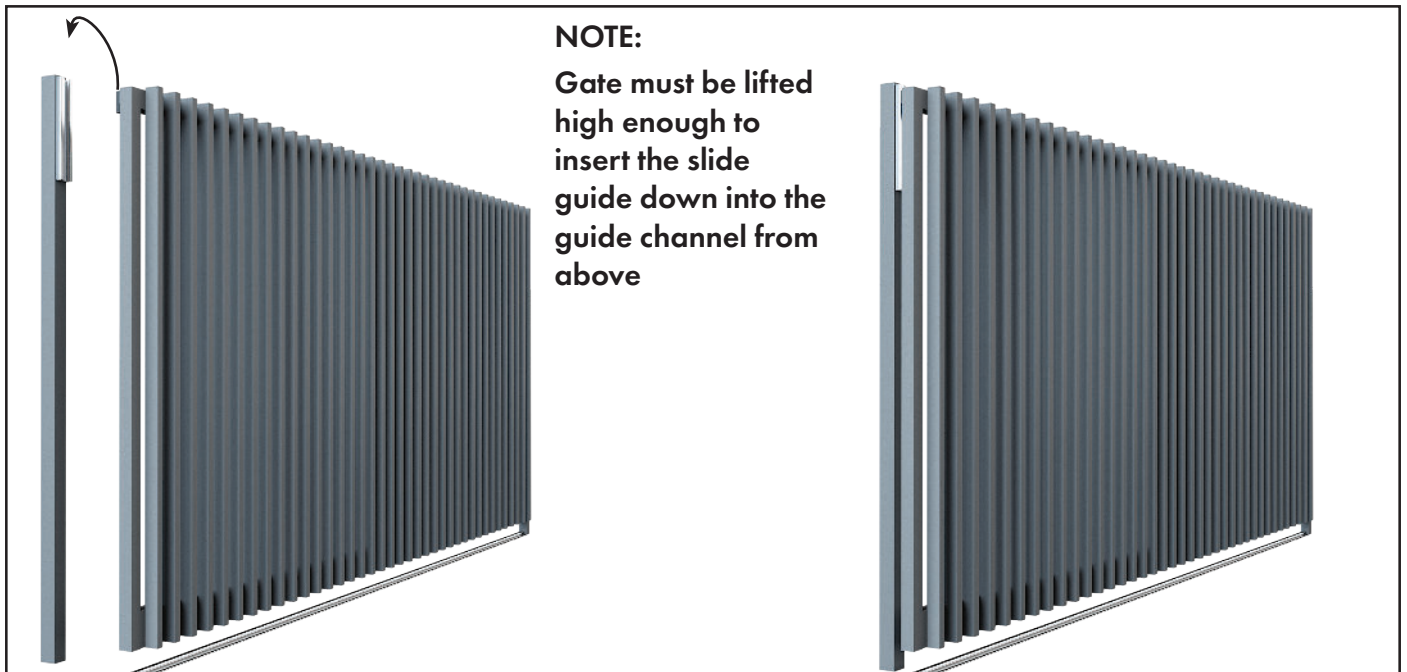
Thoroughly clean concrete dust from holes and insert track pins into each hole and hammer into position.

NOTE: Take care not to hit raised roller guide



22 IF USING SLIDE GUIDE

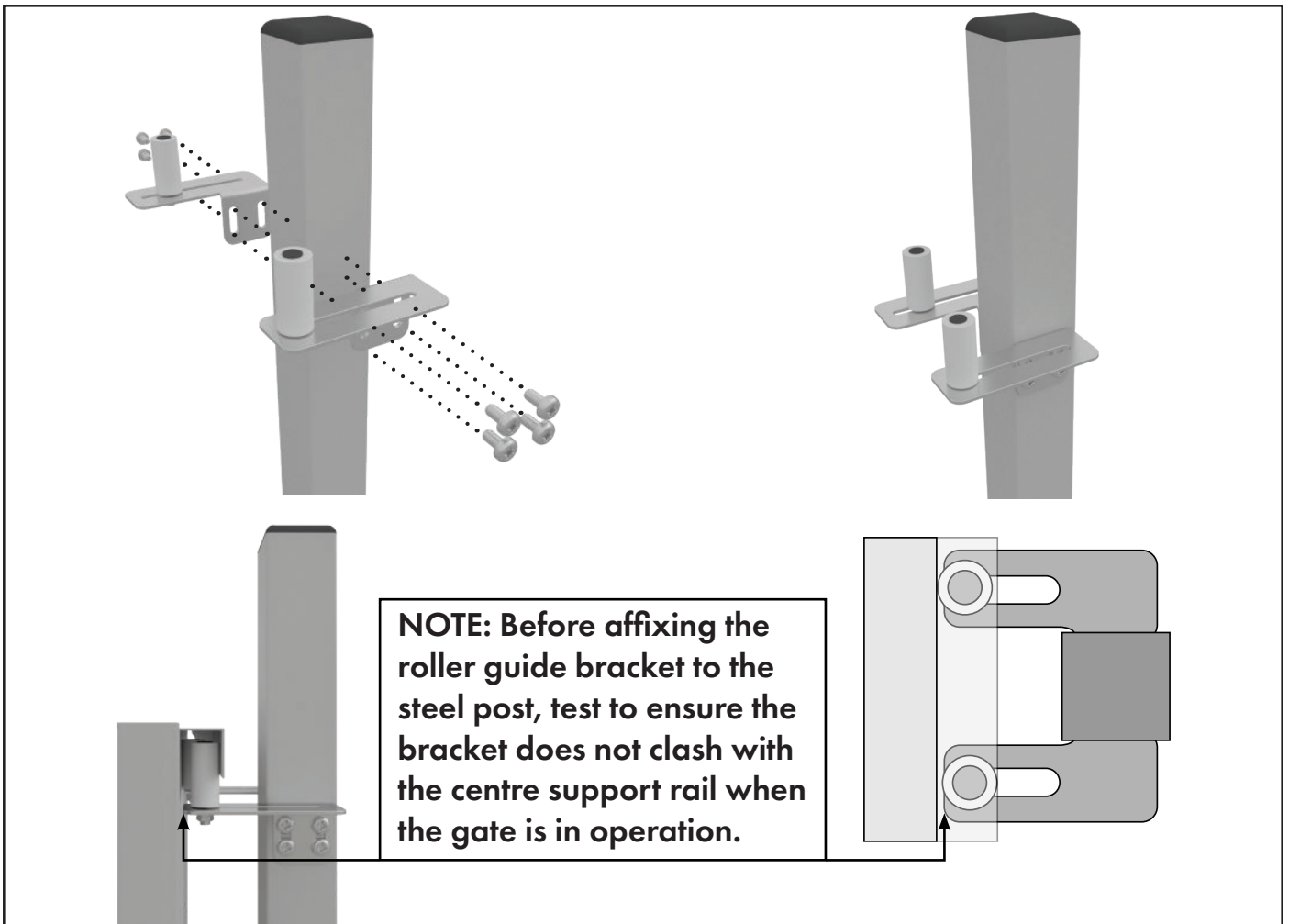
Slide the slide guide onto the top rail.



23 IF USING SLIDE GUIDE

Attach slide guide to post. Then, with help from multiple personnel, lift the gate into position.

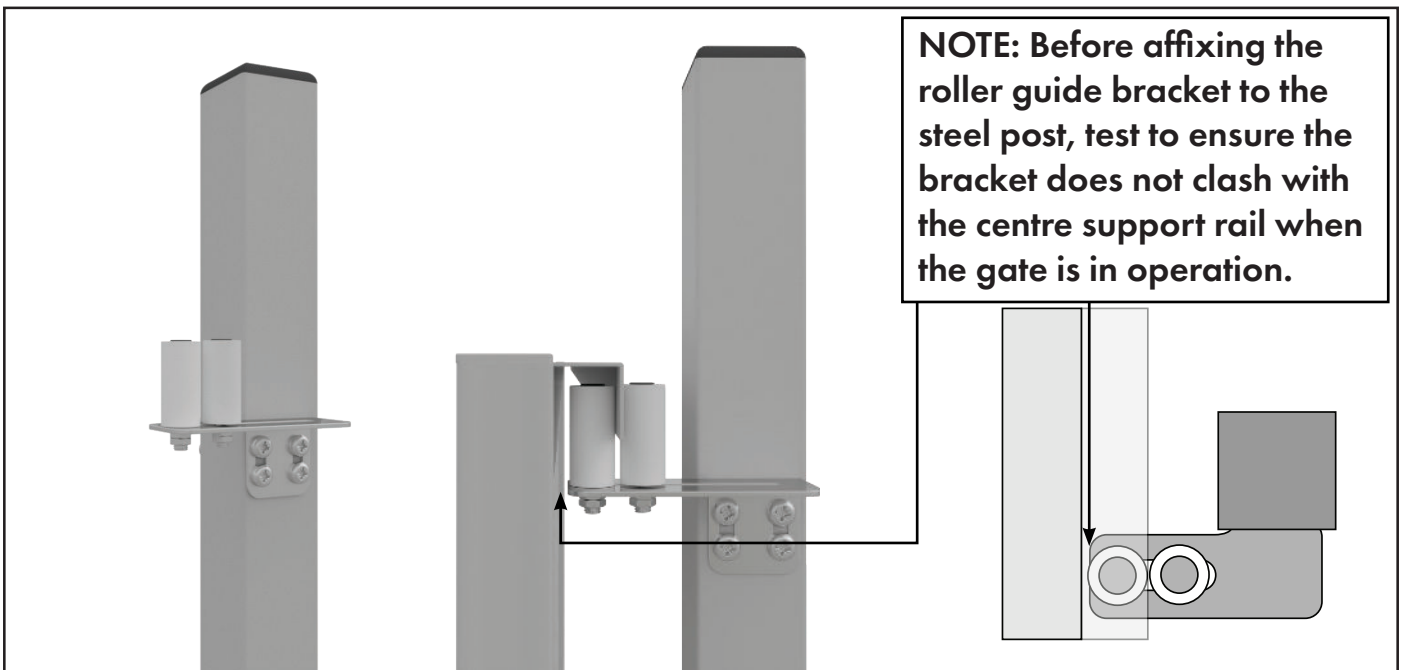
INSTALL TIP: Generally, the top of the post is installed in-line with the top of the gate. However, if installing on an uneven travelling surface, the top of post may need to be higher than the installed gate height to allow for the up and down movement of the slide guide.



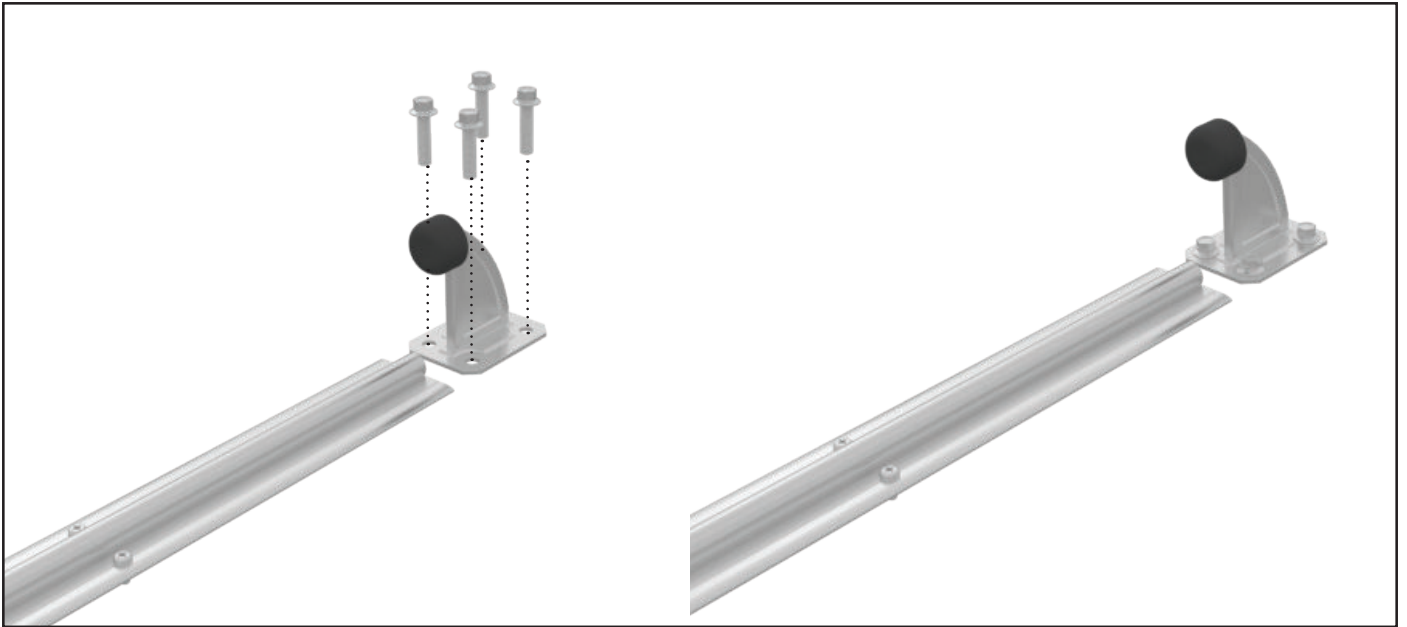
24a IF USING ROLLER GUIDES

Affix roller guides to both side of 65x65mm post. Slide gate into place with both rollers internal of top rail channel. Adjust rollers forwards or backwards and ensure 1x roller is touching each side of inner channel.

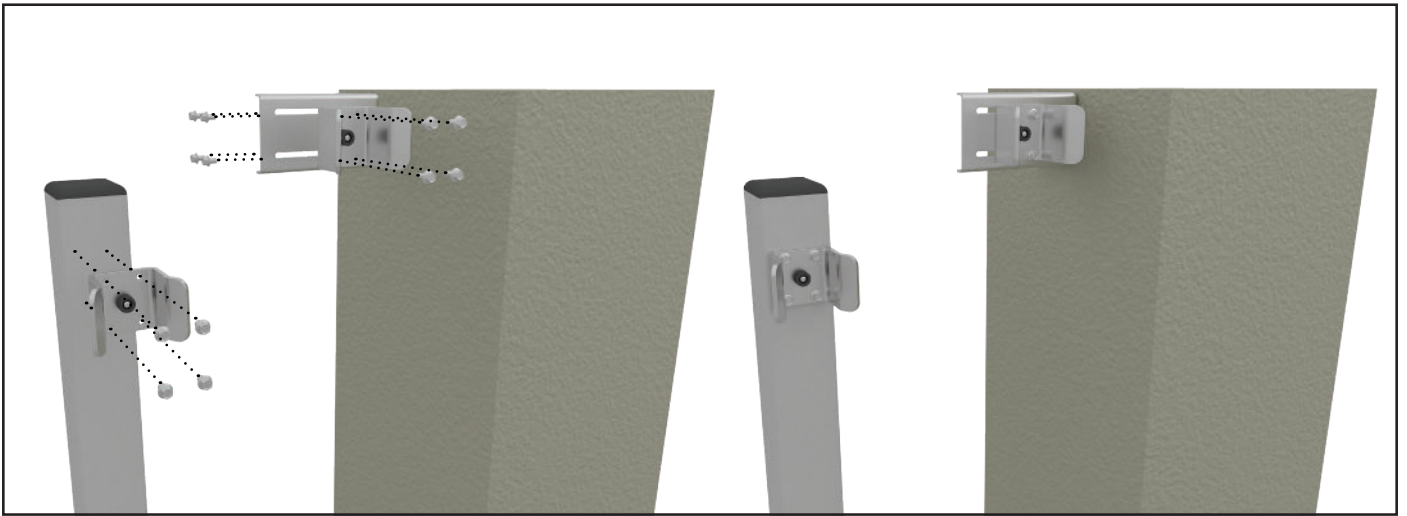
NOTE: Roller guides should only be used where deviation in height along gate travel is 15mm or less. If deviation in height is greater than 15mm, use slide guide.



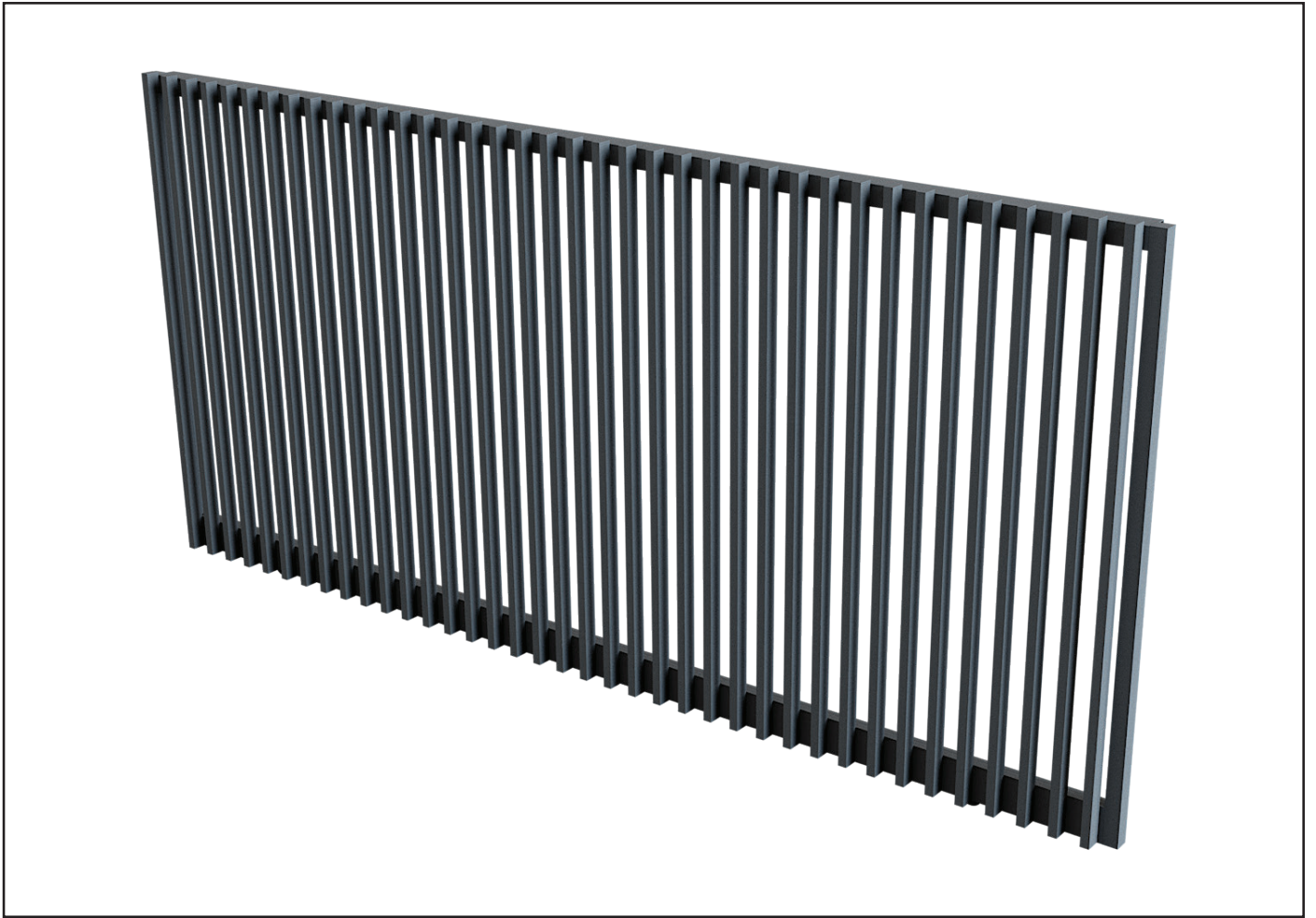
24b Alternative roller guide fixing method: Remove roller from 1x roller guide bracket and fit to other bracket. Affix roller guide bracket to 65x65mm post, then slide gate into place with 1x roller inside and 1x roller outside of top rail channel. Adjust rollers forwards or backwards as needed.



25 Attach the gate stop to concrete floor to allow the gate to stop at a fully opened position (fixings not included).



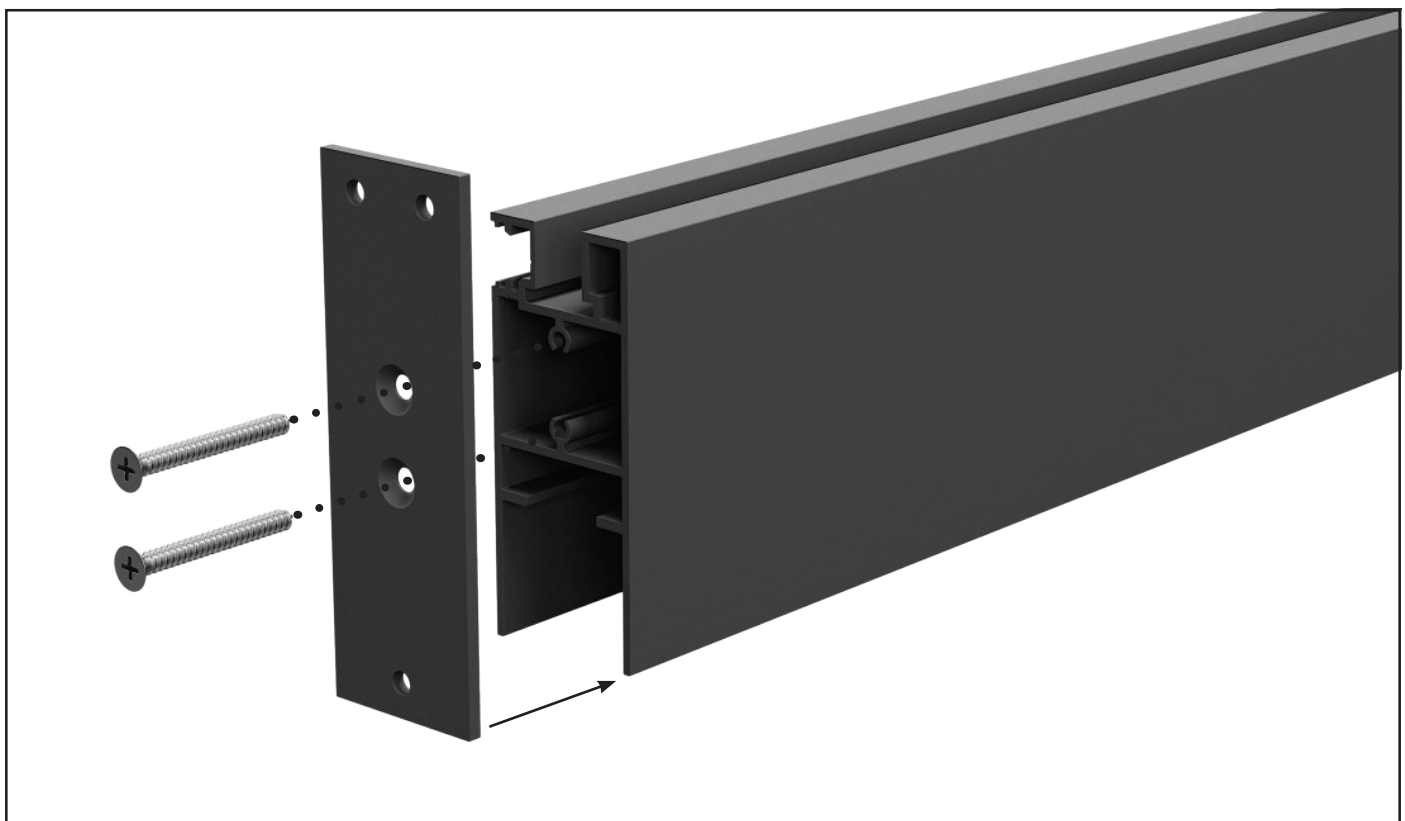
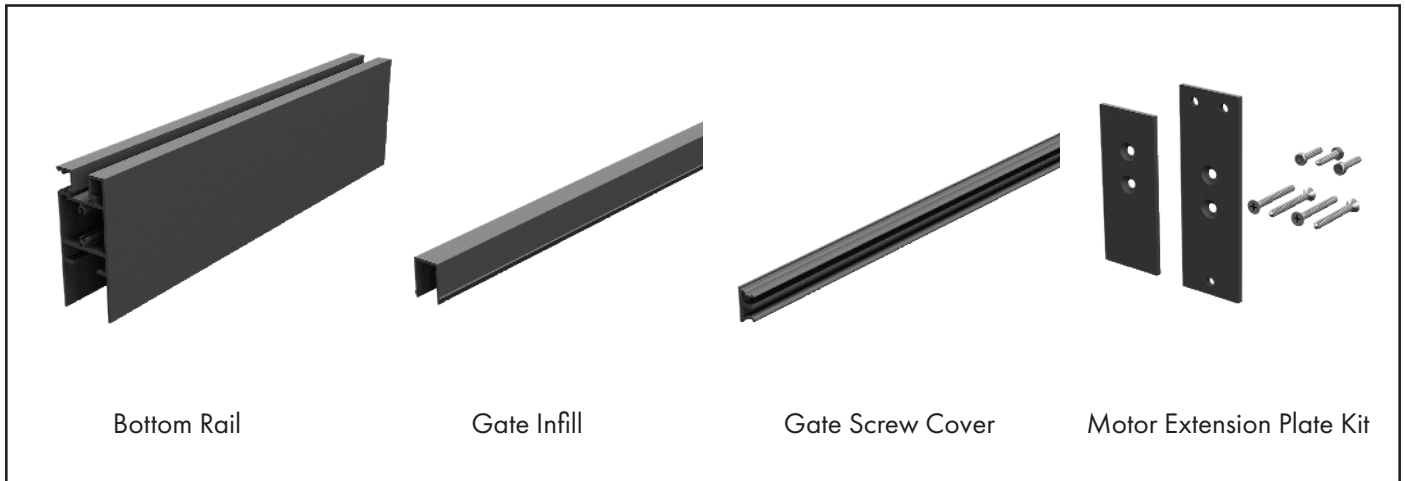
26 Attach the U catch to the 65mm steel post (or affix F catch to existing wall/pillar) to allow the gate to stop at the fully closed position (fixings not included).



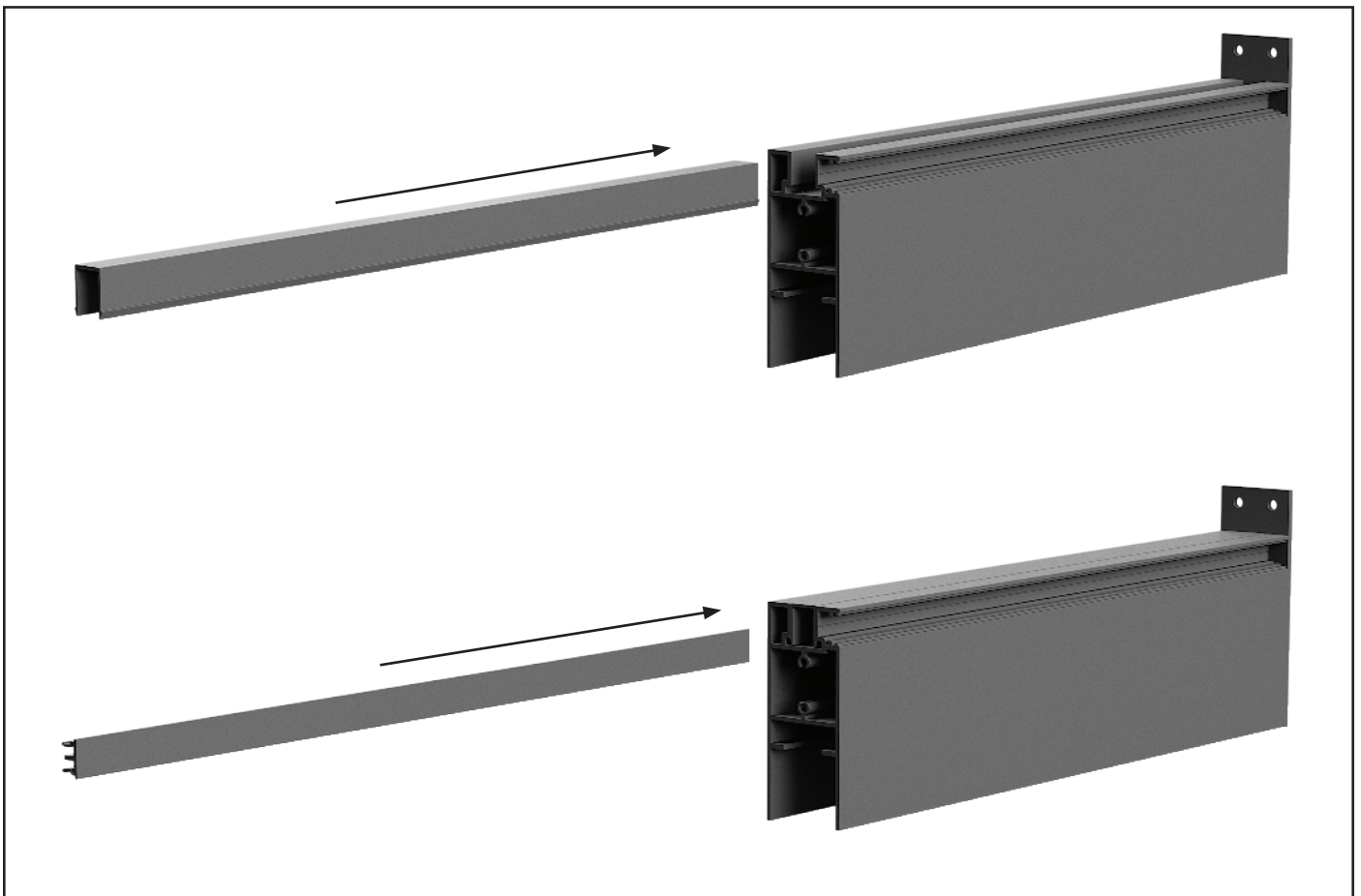
● Gate Fabrication complete.

APPENDIX 1

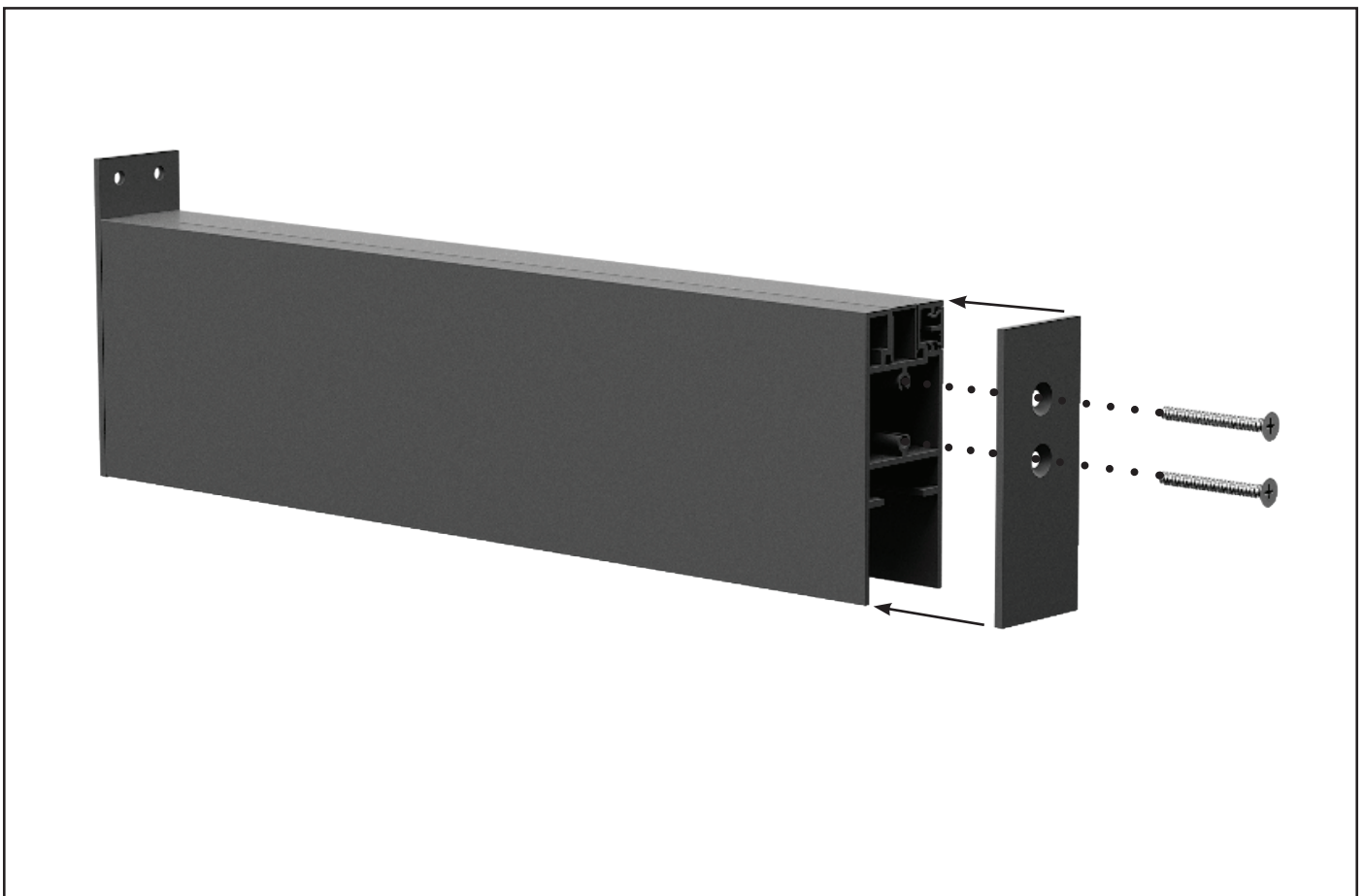
MOTOR EXTENSION KIT



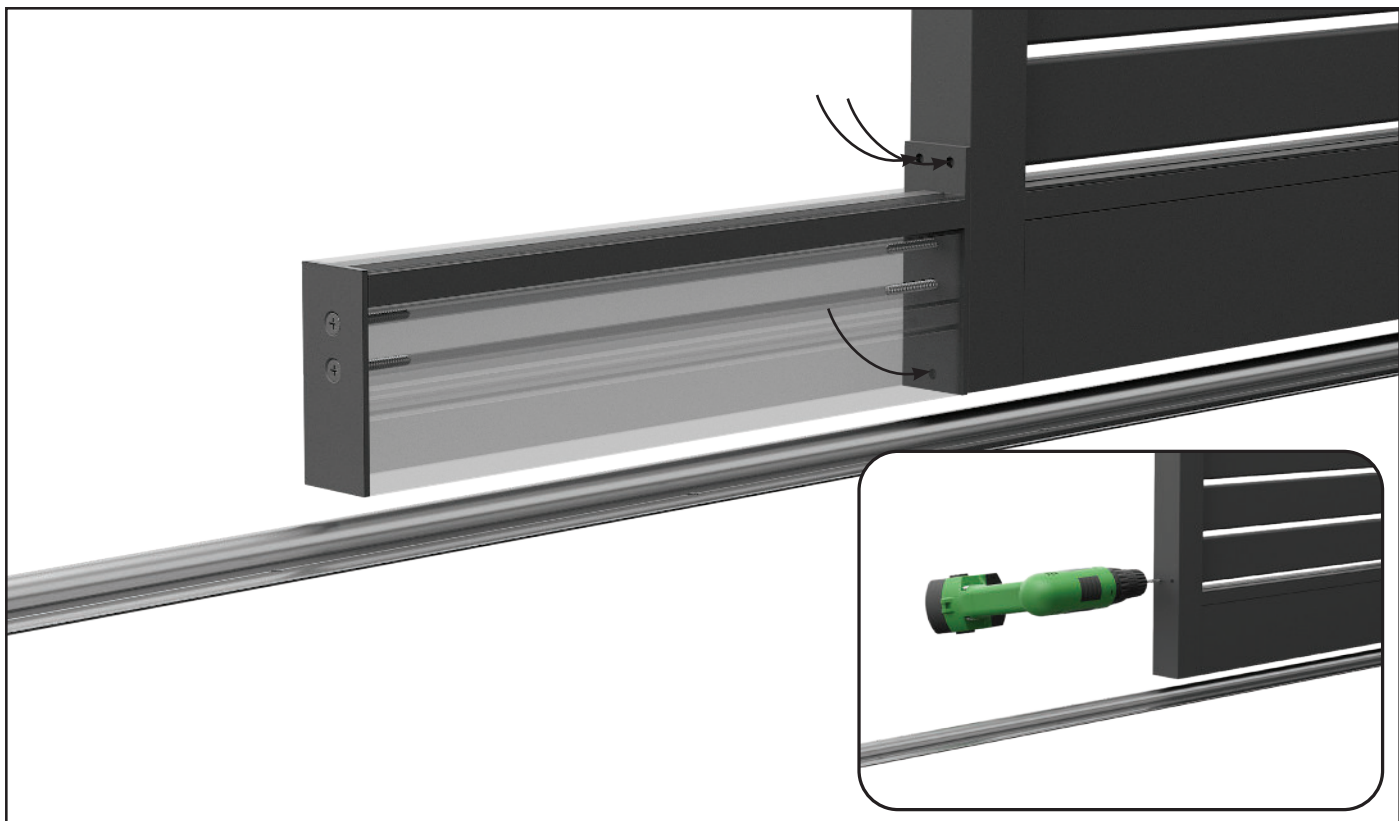
i Attach Fixing Plate to the Bottom Rail using 2 x CSK screws



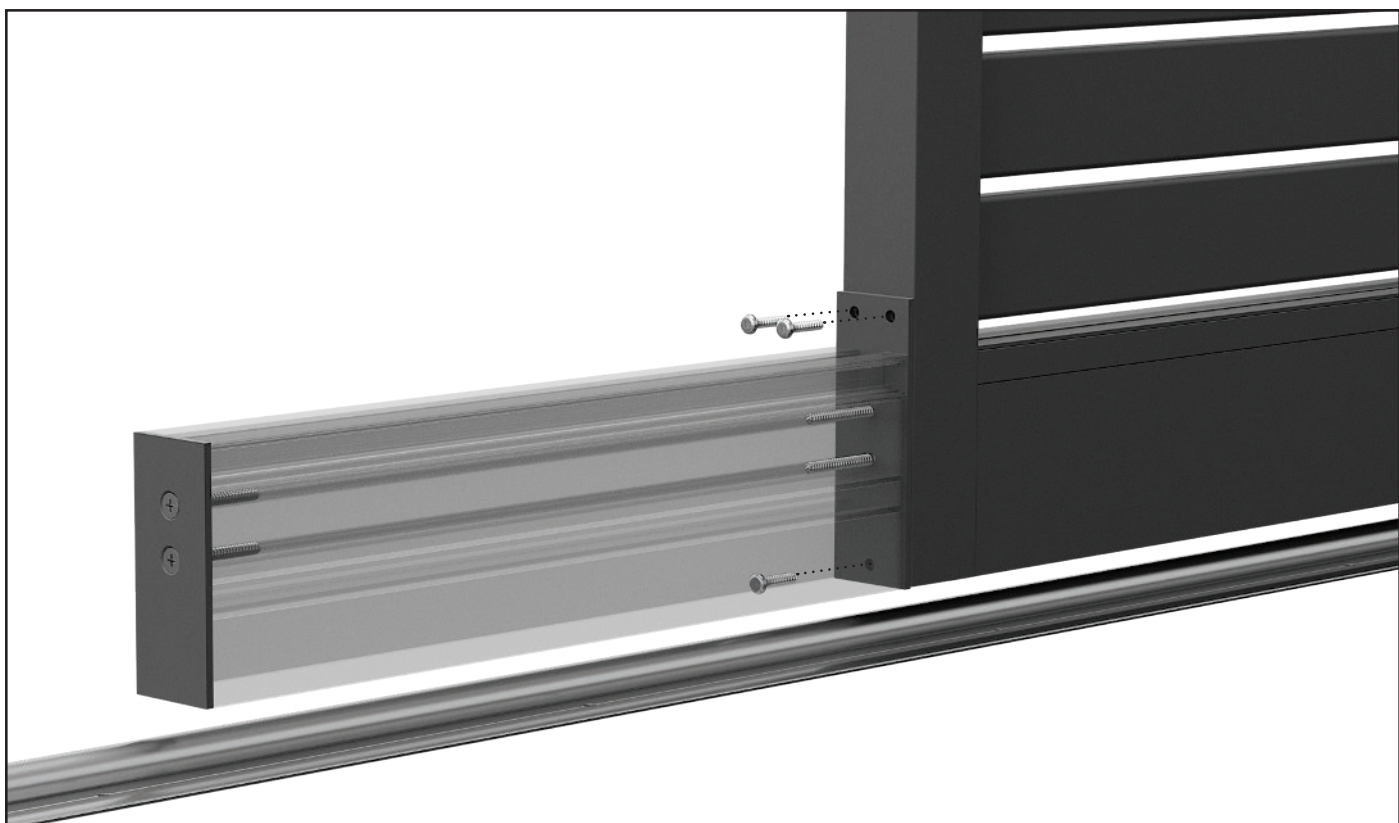
ii Slide the Gate Infill and Gate Screw Cover into the Bottom Rail



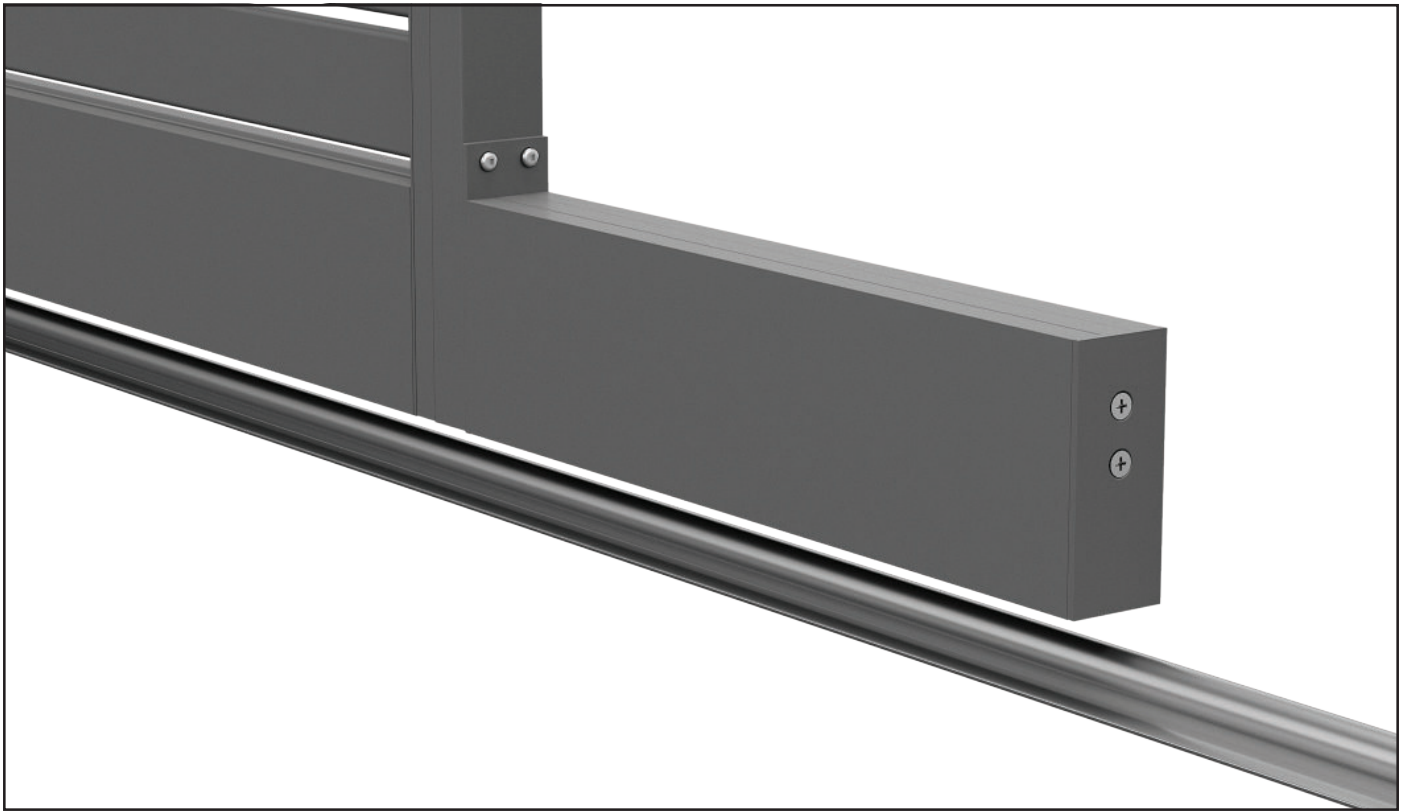
iii Attach the End Plate to the Bottom Rail using 2 x CSK screws



- iv Position Motor Extension against the Gate Side Frame with the Fixing Plate level with the bottom. Mark and predrill 3 x 4mm holes.



- v Secure the Motor Extension to the Sliding Gate Side Frame with 3 x 25mm Panhead screws.



● Completed Motor Extension