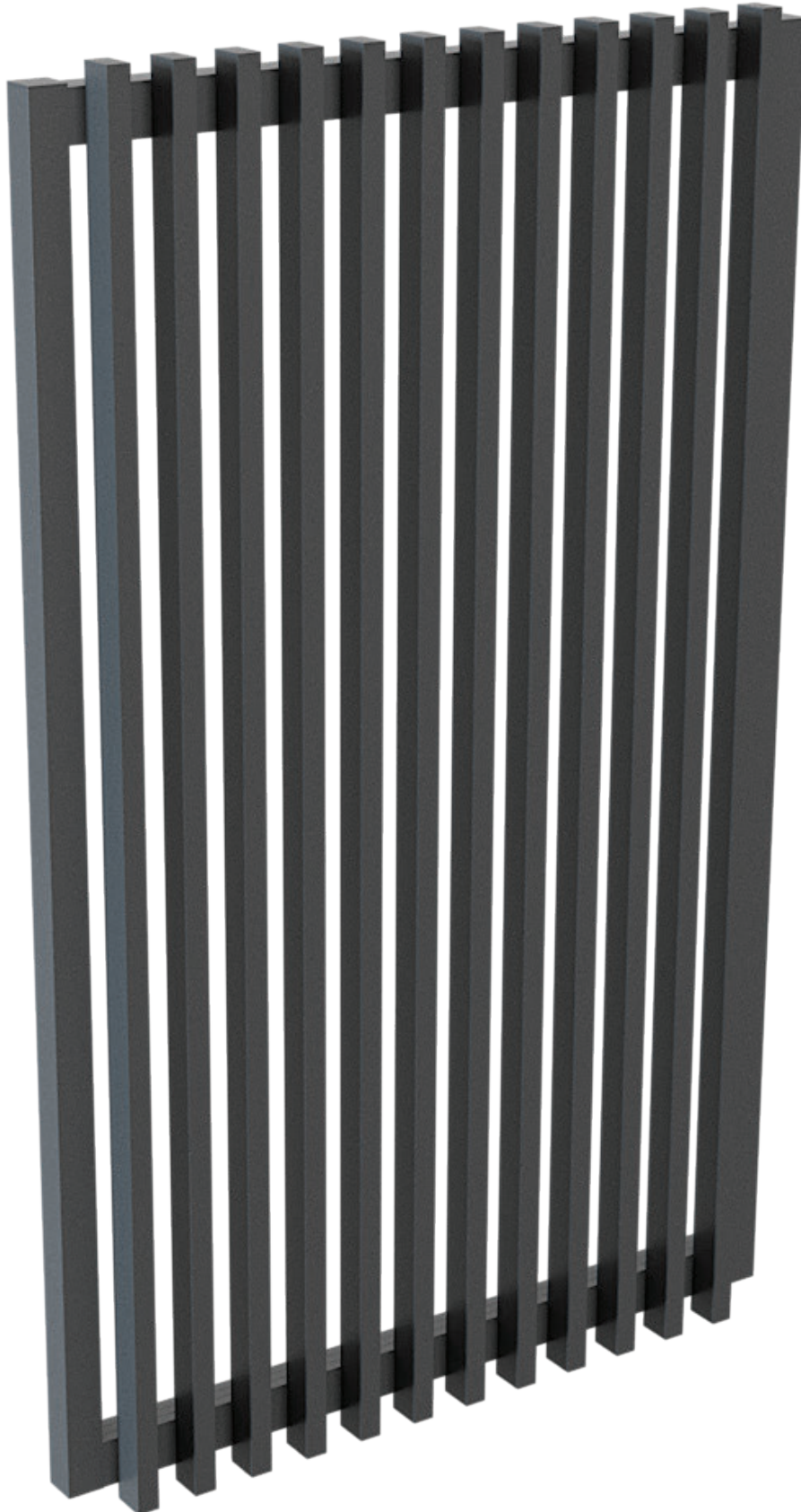




**QUICKSCREEN GATE**  
**NEXIA VERTICAL BATTEN**  
**HINGED PEDESTRIAN GATES**

**FABRICATION**  
**OVERVIEW**

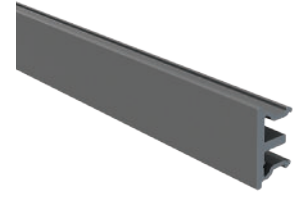




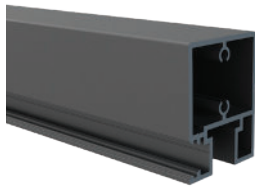
Nexia Batten  
and Clip  
(various sizes)



Gate Side Frame



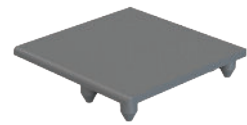
Gate Screw  
Cover



65mm Top/  
Bottom Rail



Gate Infill



Gate Top Cap



Joiner Blocks and  
Screws for Top/Bottom  
Rails



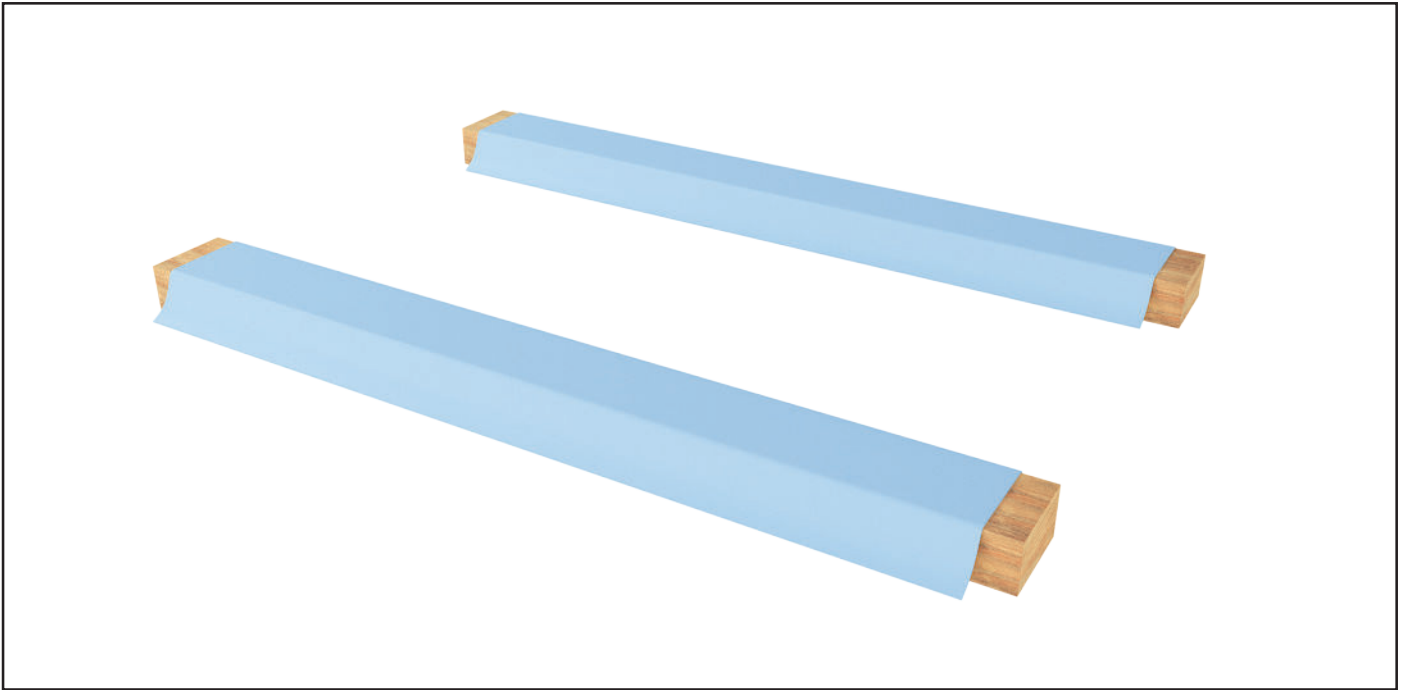
Panhead Screws



Self-drilling  
Wafer Screws



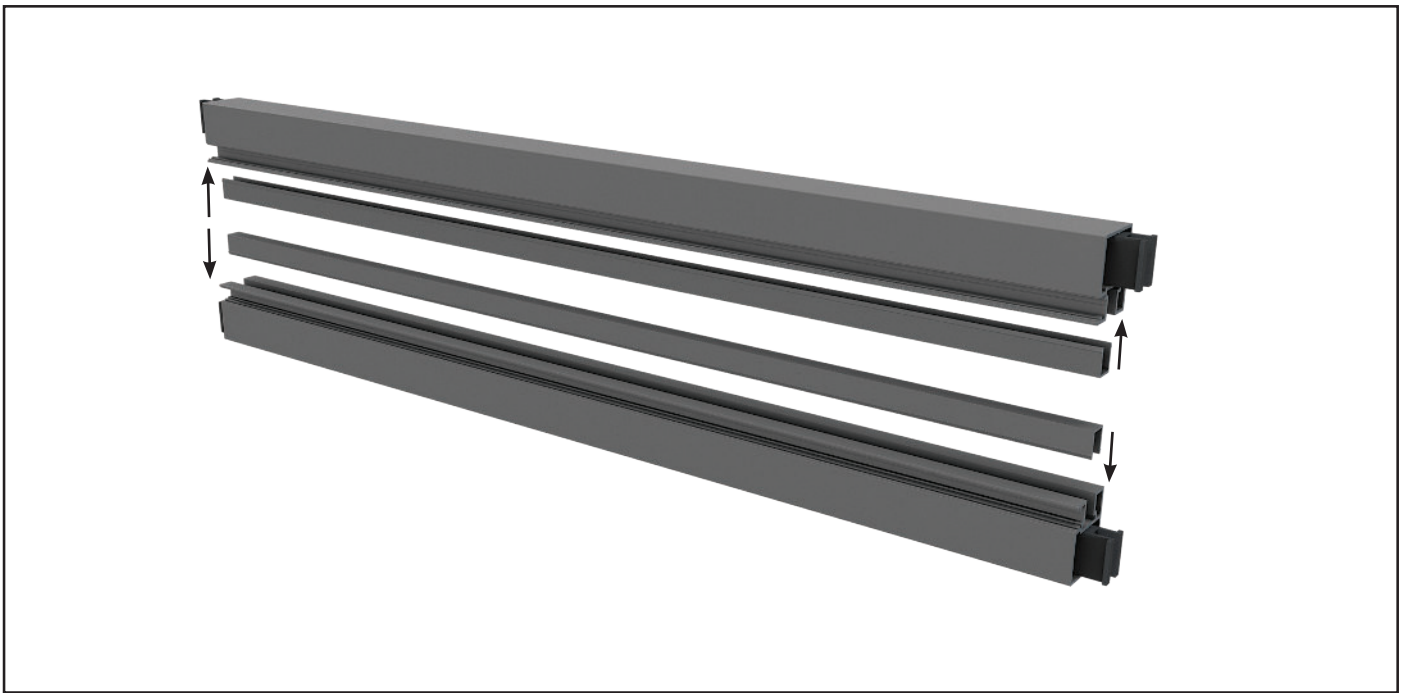
Nexia End Caps, End Plates  
and Connector Plates  
(various sizes)



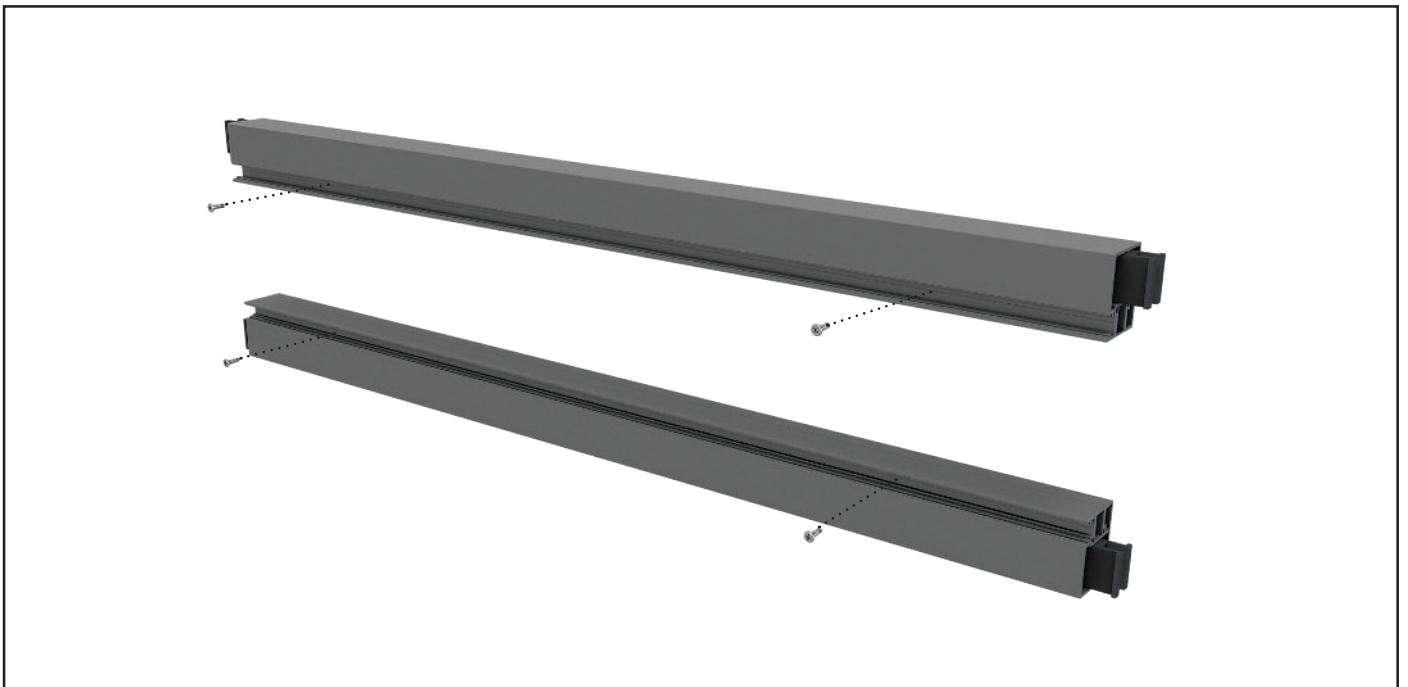
1 Set up the gate fabrication area on a flat, protected surface or padded bearers



2 Attach the Joiner Blocks to both ends of the Top and Bottom Rails with two screws per Joiner block using a Phillips head #3 driver bit on a low-torque/low-speed cordless drill setting.



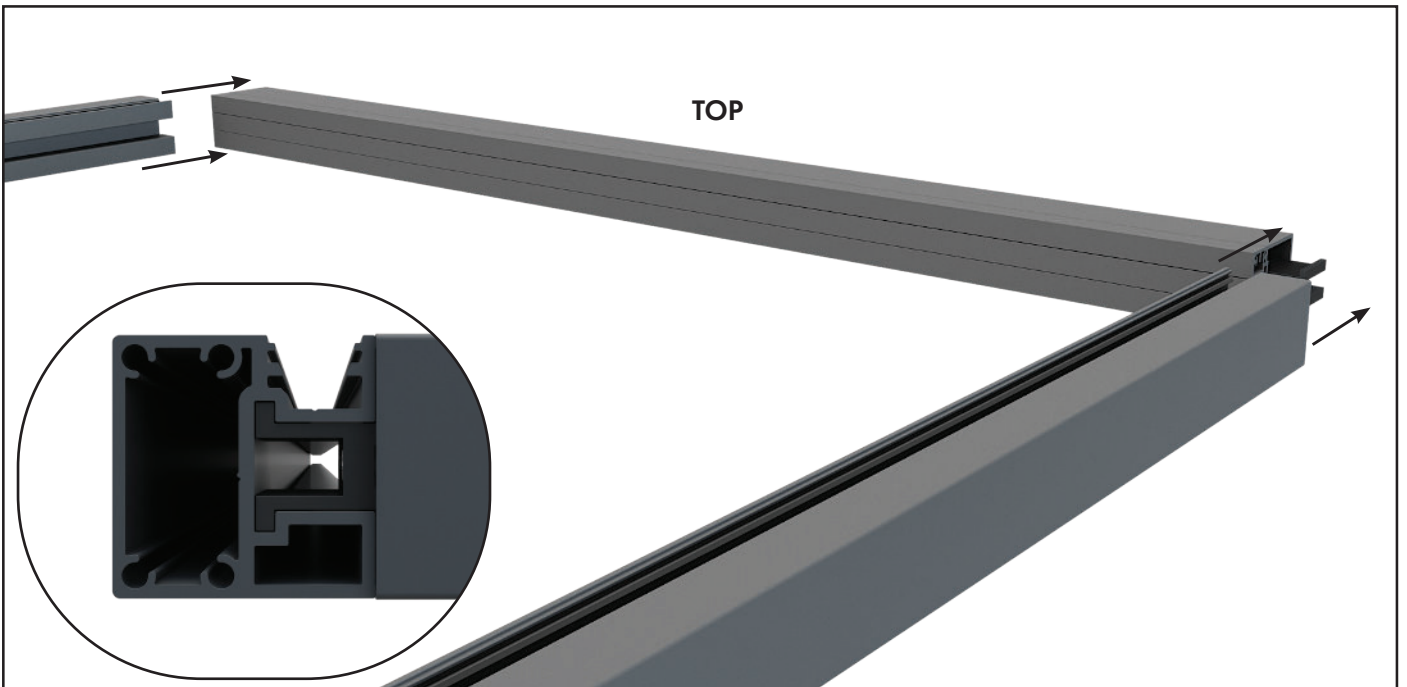
3 Insert Gate Infills to the Top and Bottom Rails.



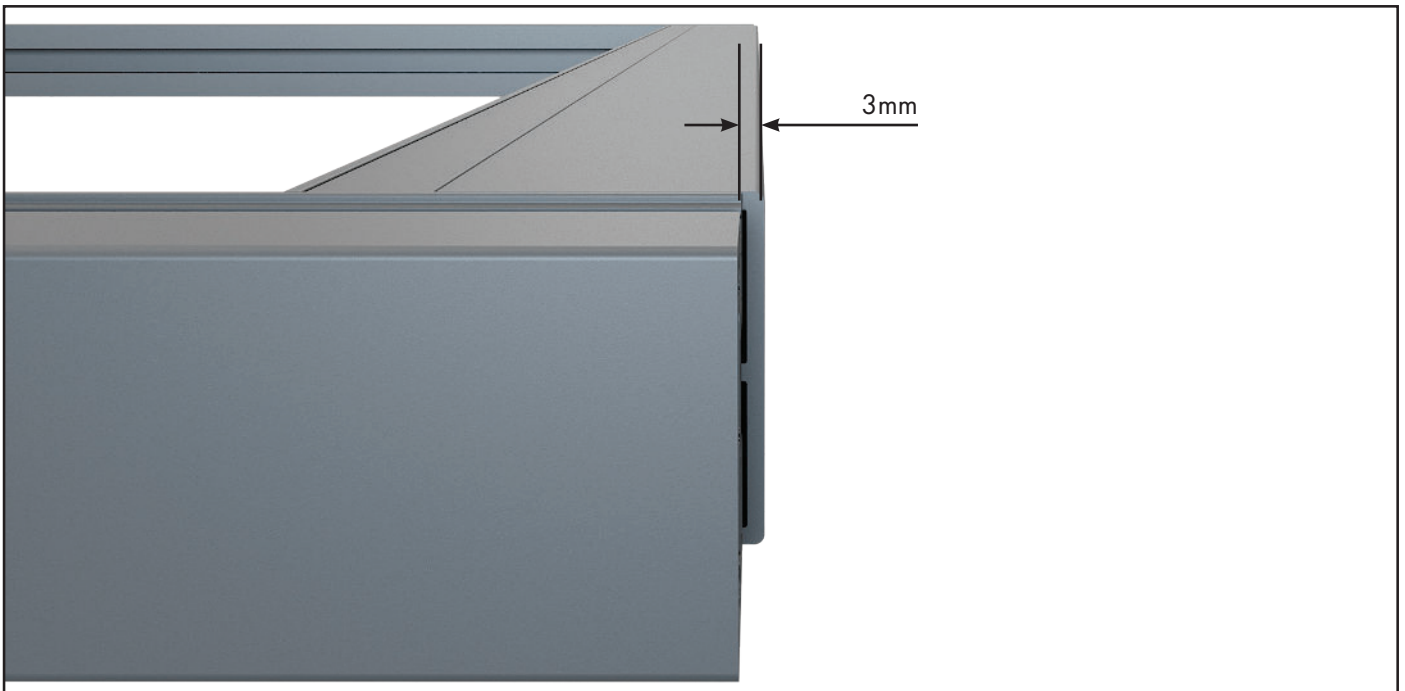
4 Secure with two self-drilling wafer screws per Gate Infill within the screw channel.



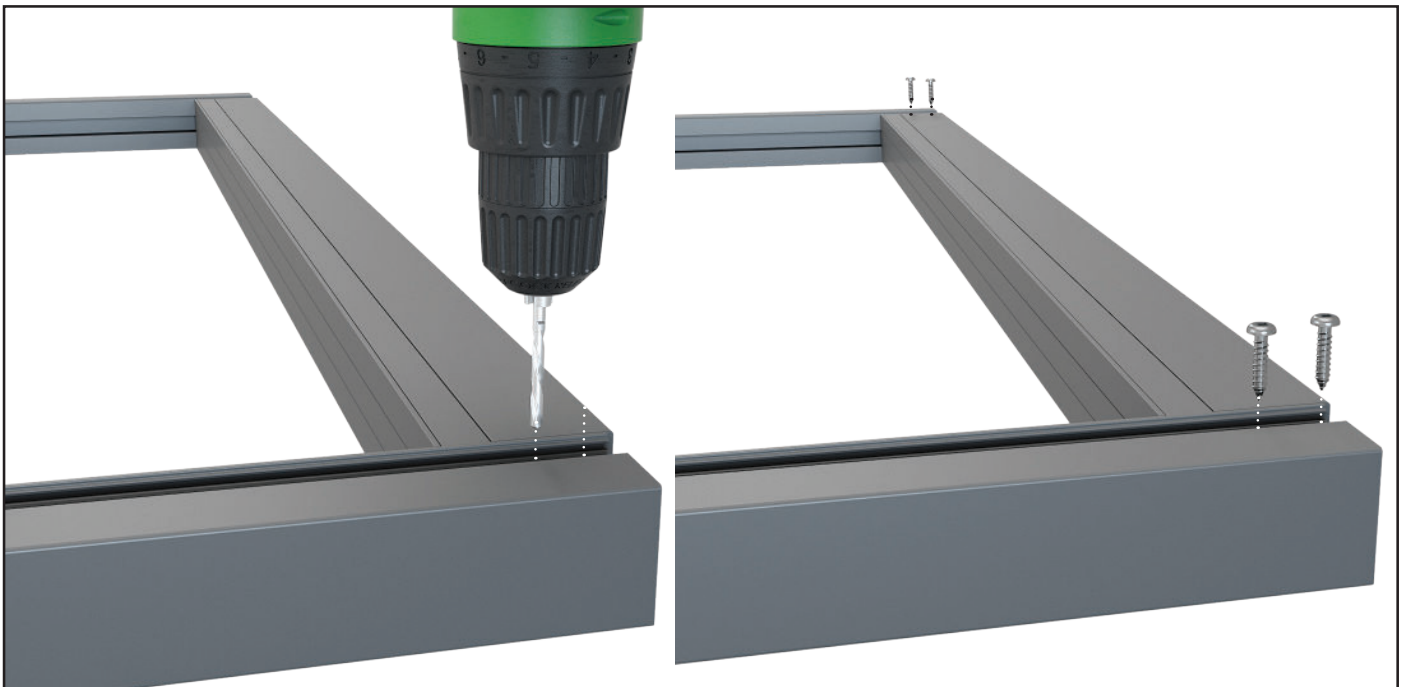
5 Snap on Gate Covers to conceal screws.



6 Slide Gate Side Frames onto the Top Rail.



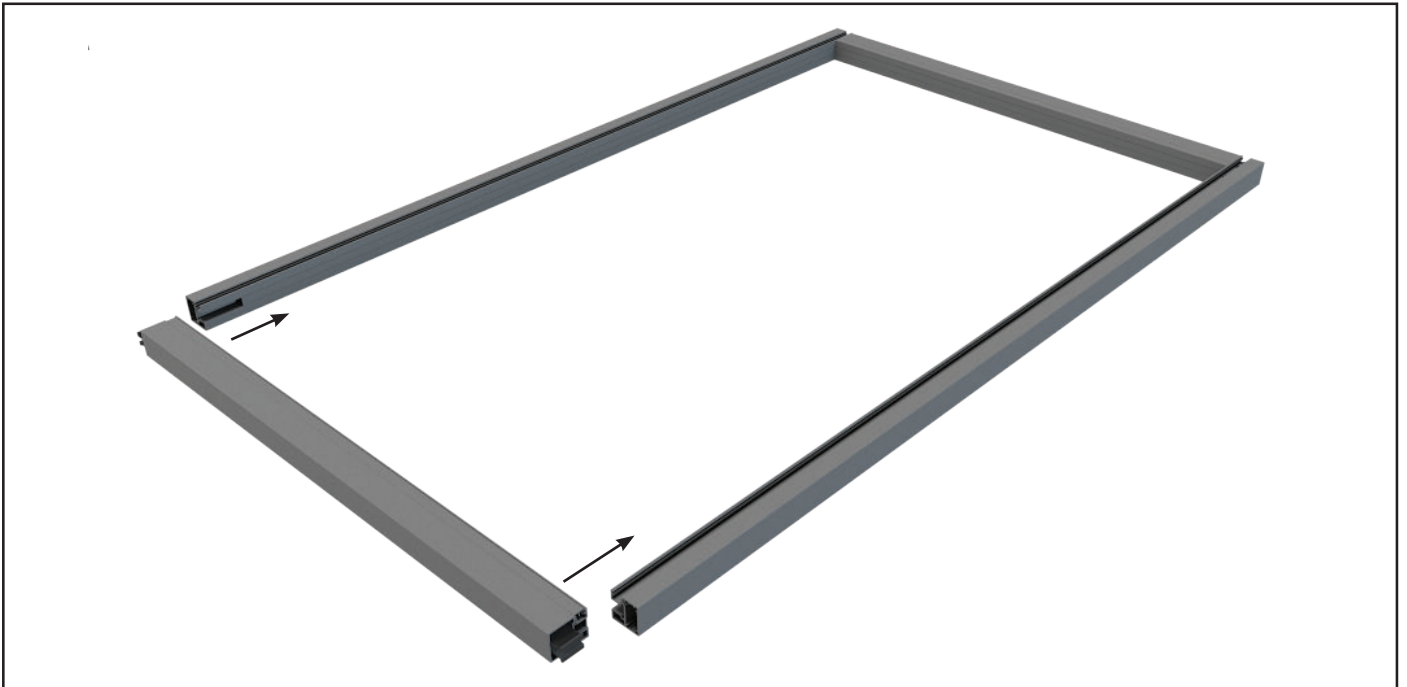
- 7 Leave a 3mm gap between the top of the Gate Top Rail and Gate Side Frame on both sides to allow for the top cap to finish flush with the Gate Top Rail.



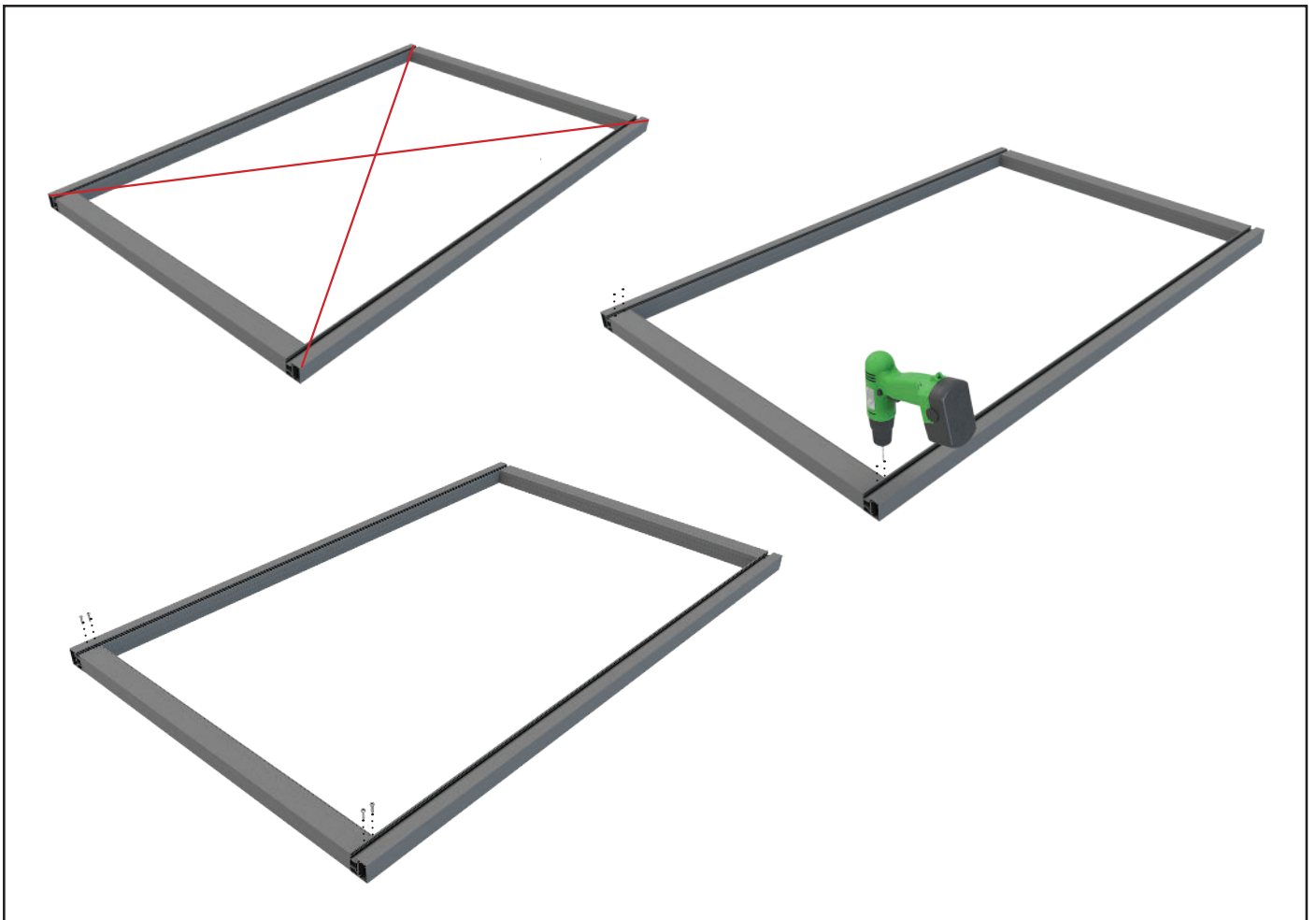
- 8 Pre-drill two 5mm holes through the Gate Side Frame screw channel and Joiner Blocks on both sides. Affix two 12G x 25mm long panhead screws per Joiner Block.



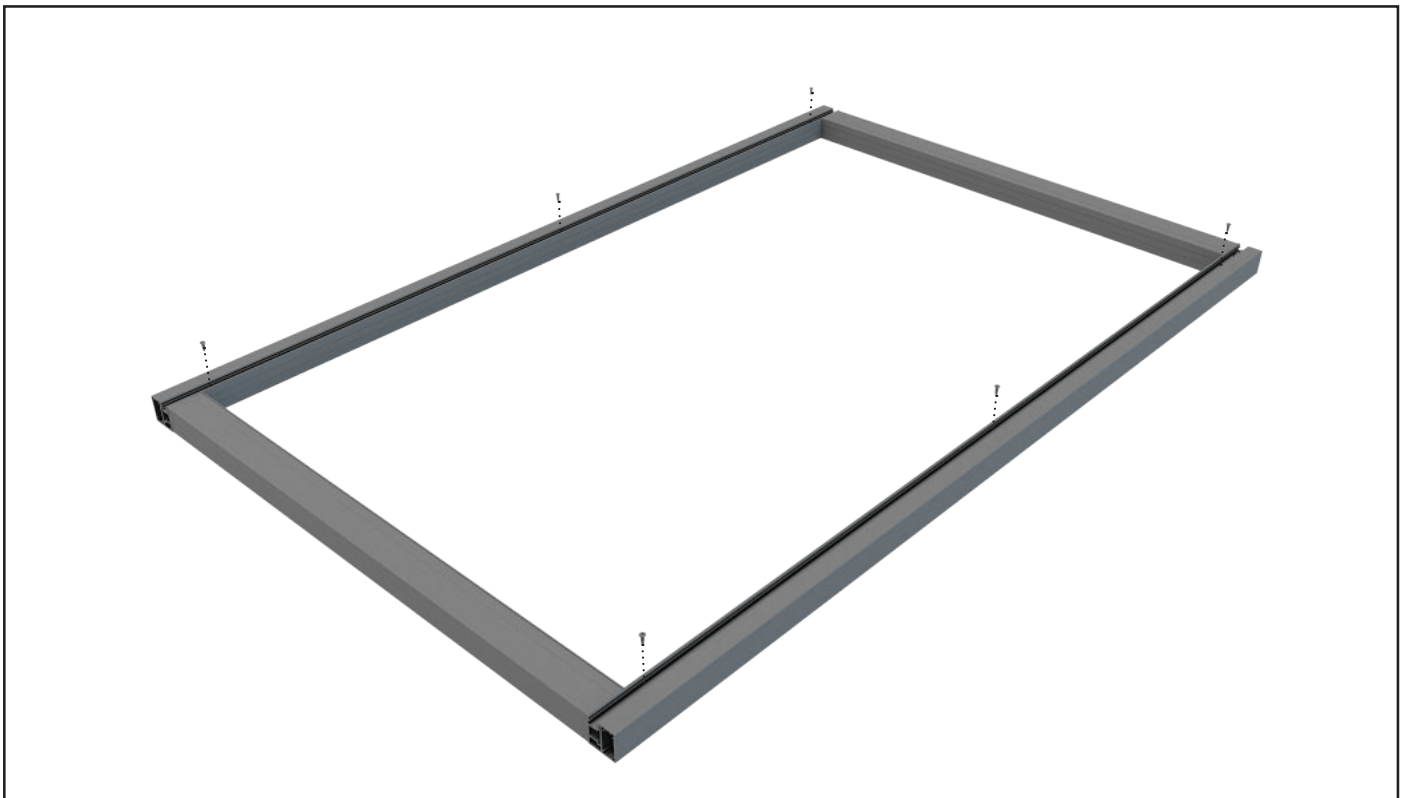
9 Insert Gate Infills into the Gate Side Frames



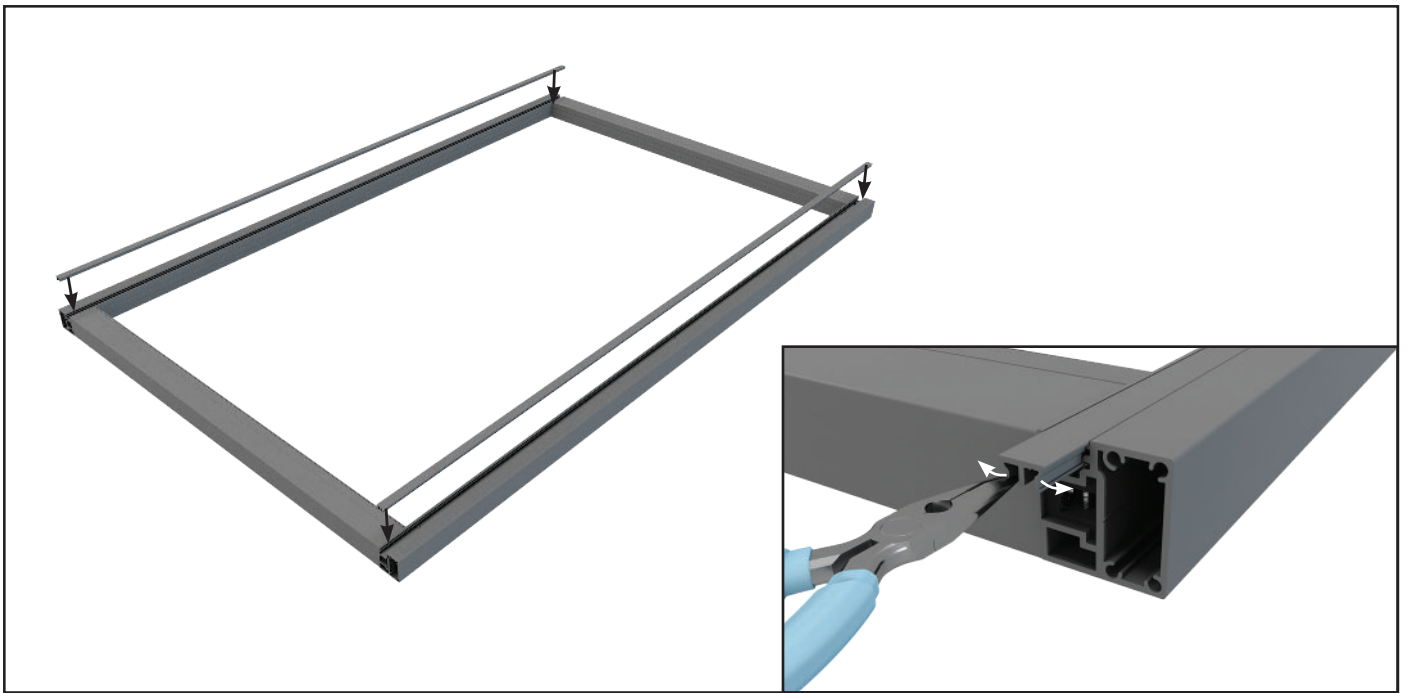
10 Slide the Bottom Rail onto the Gate Side Frames, ensuring the Bottom Rail aligns with the bottom of the Gate Side Frames.



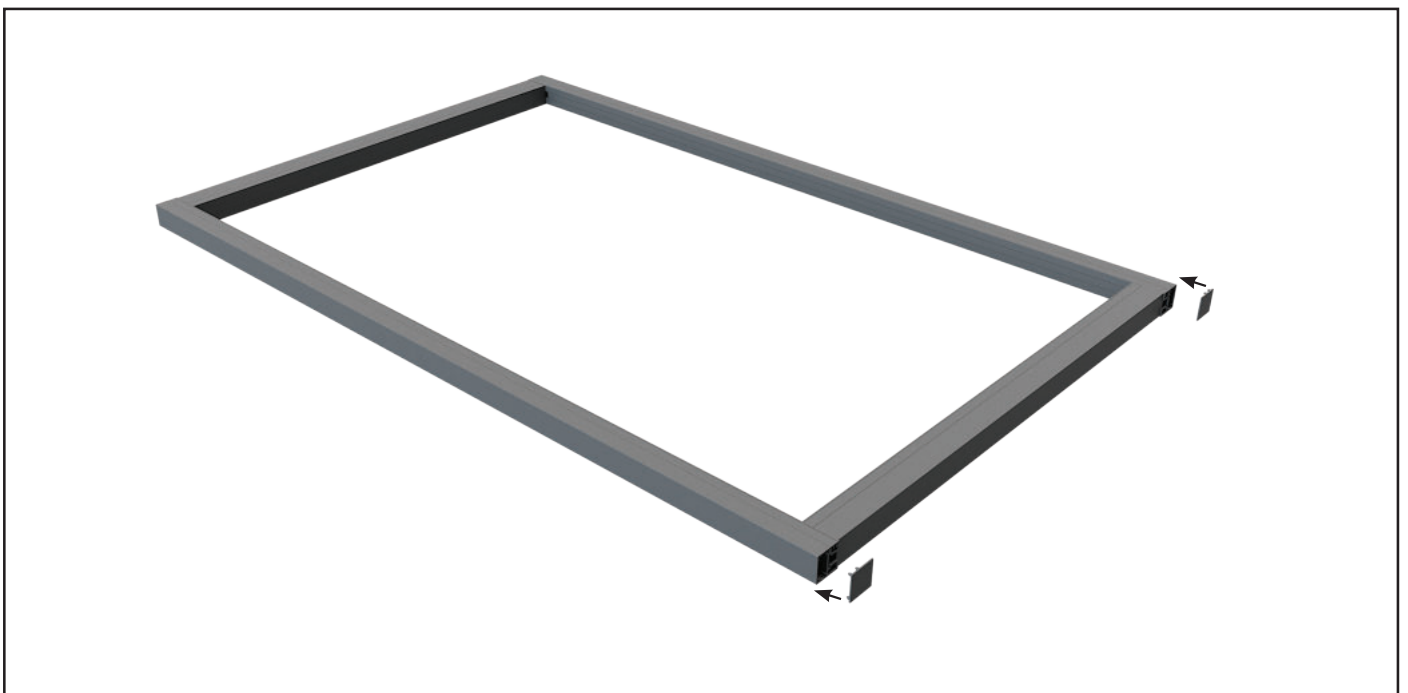
- 11 Ensure the gate is square. Pre-drill two 5mm holes through the Gate Side Frame screw channel and Joiner Blocks on both sides. Affix two 12G x 25mm long panhead screws per Joiner Block.



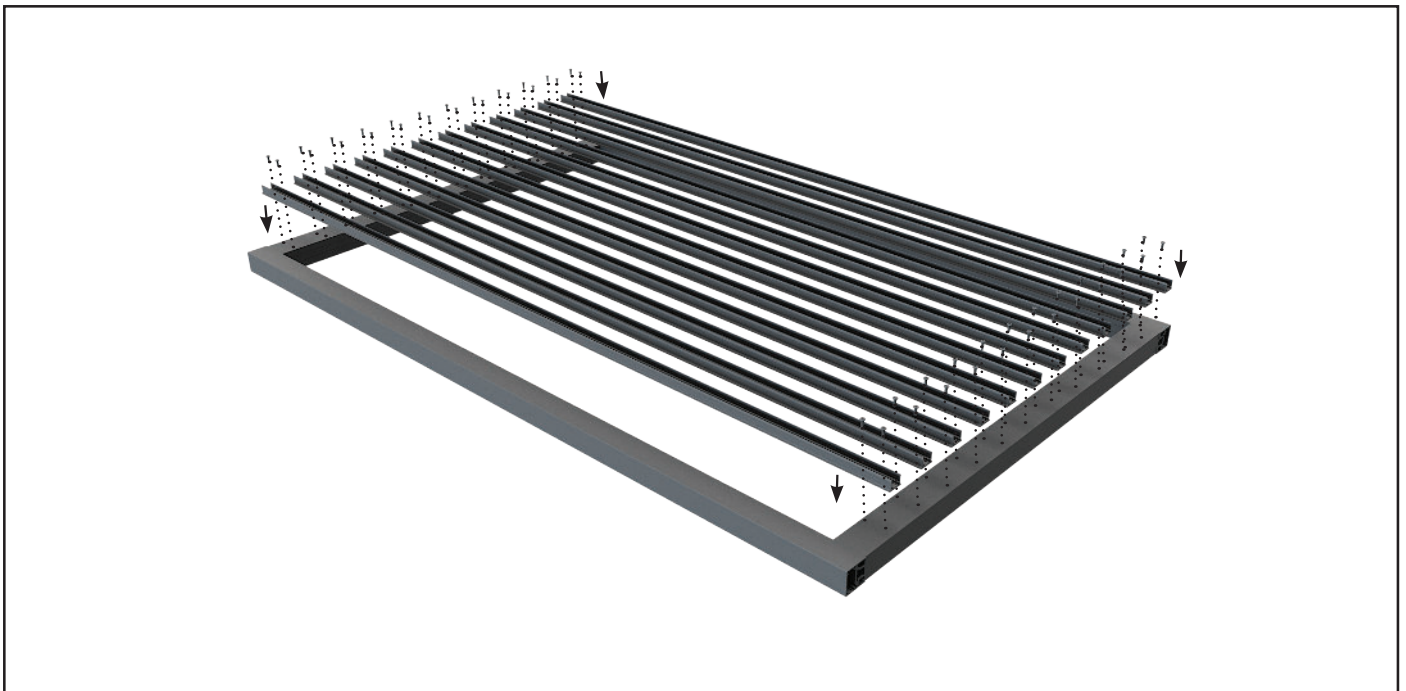
- 12 Secure the Gate Infill with three self-drilling wafer screws each side.



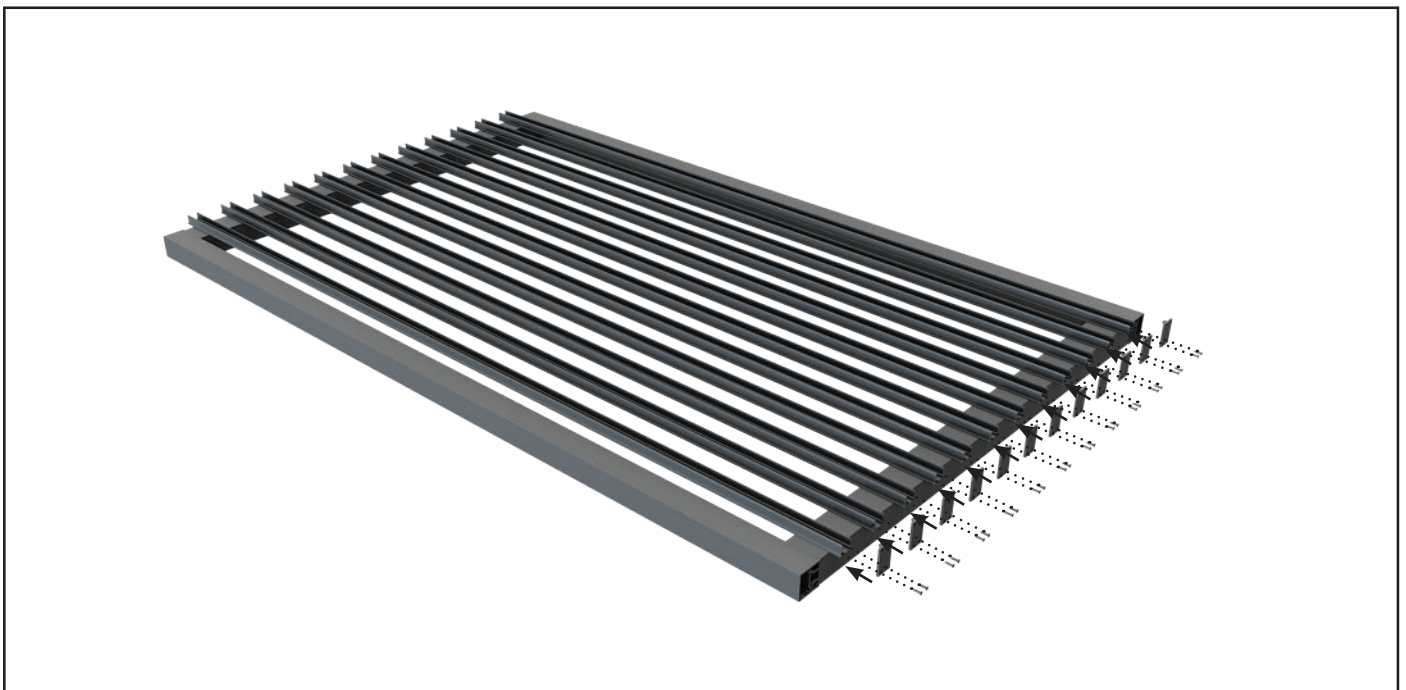
- 13 Insert the two Gate Screw Covers to the Gate Side Frames.  
Once inserted, bend the Screw Cover legs as required to achieve a tight insert.



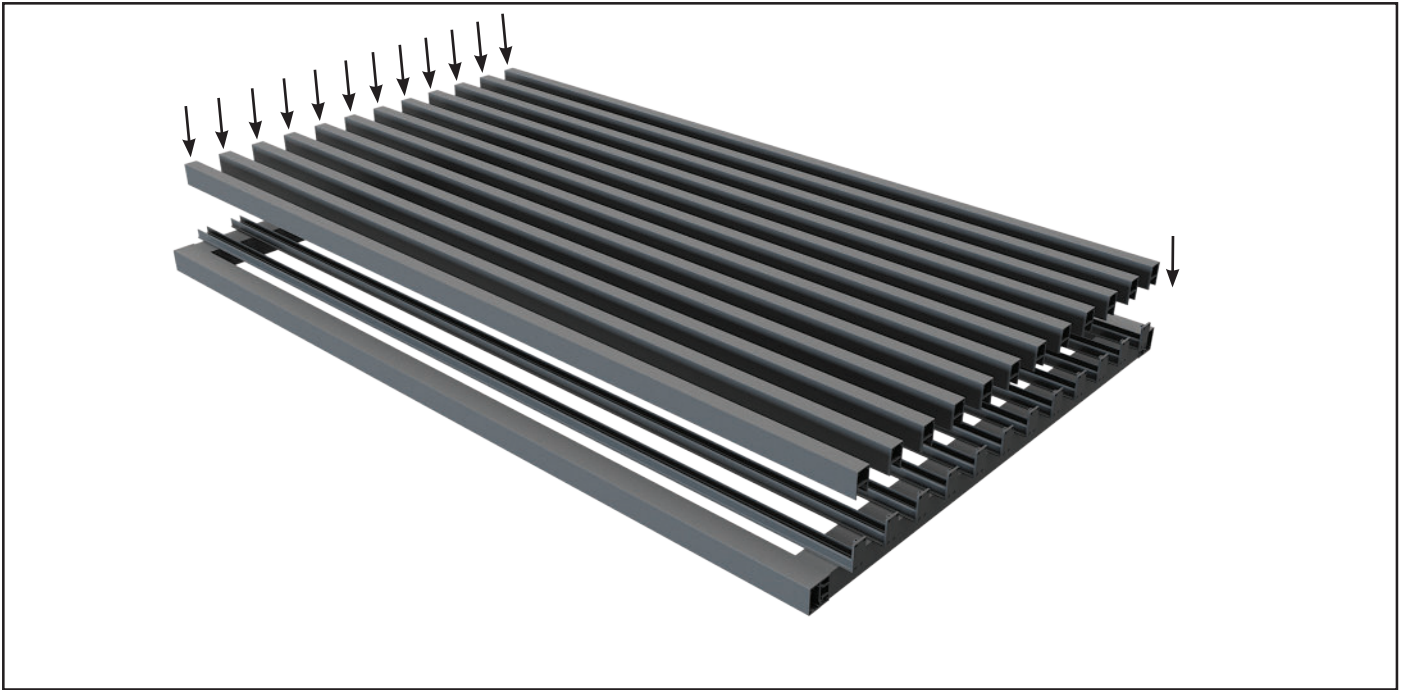
- 14 Insert the two Top Caps.



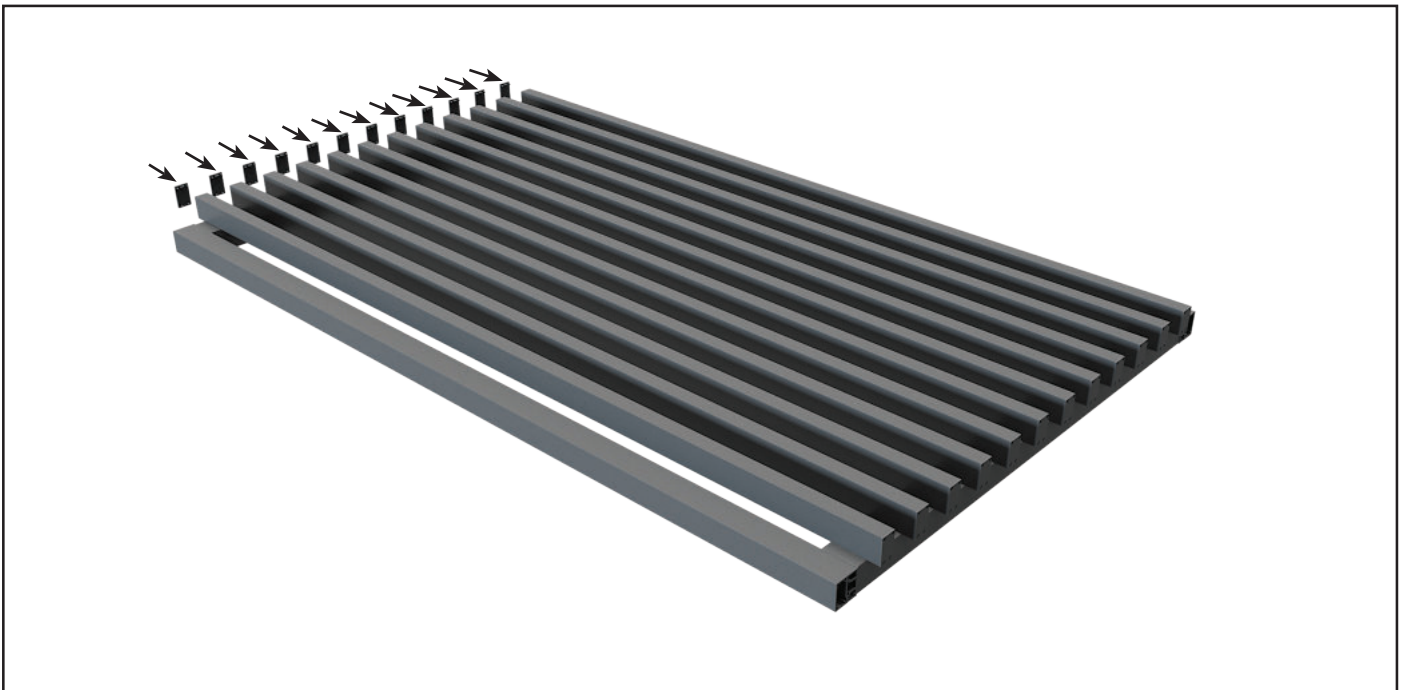
- 15 Flip to front of gate and affix with two self-drilling screws at each end the Nexia Batten Clip to the Top and Bottom Rails at the desired spacing.



- 16 Affix Connector/End Plates to the bottom of the Nexia Batten Clips with Plate Screws



17 Clip Nexia Batten Front onto the Nexia Batten Clips.



18 Push in End Caps or affix Connector/End Plates to the tops of the Nexia Battens and Clips



● Gate Fabrication complete.